

systemtronic
datasheet LAURA



General description:

Laura is the systemtronic table more versatile and functional we have created. This little table has so many possibilities as you can imagine. We like to see it on a chill out, in a waiting room... where do you fancy it?

Designer: Mermelada Estudio

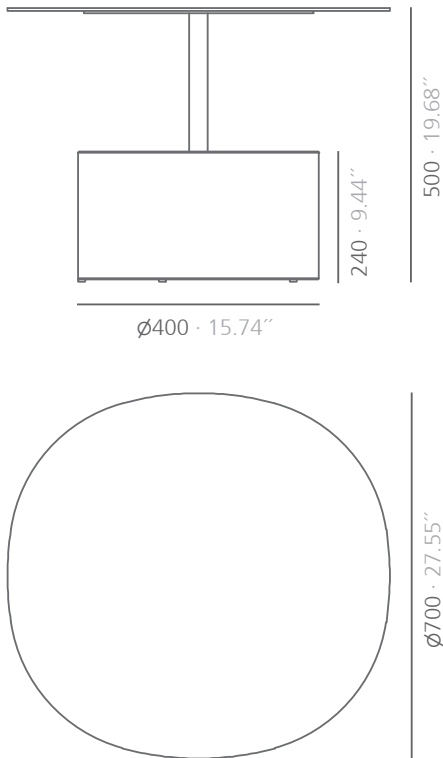


Technical description:

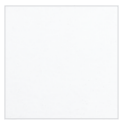
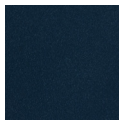
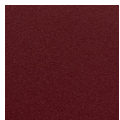
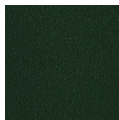
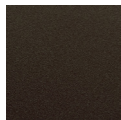
Material: Aluminum and Steel.

Dimensions: Ø700x500mm Ø27.55"x19.68"

LAURA



mm · inches

Finishes:**Structure**matte white
RAL 9003satin black
RAL 9011textured red
RAL 3001textured blue
RAL 5011textured garnet
RAL 3005textured green
RAL 6009textured red
sirungtextured bronze
baganatextured rust
rame

*Polyester paint

Consult for special dimensions or any other modification.

Maintenance:

-Polyester Paint:

For dry dirt (dust), use a damp cloth. For greasy/oily stains (fingerprints), wipe with a sponge with water and dishwashing liquid. Rinse with a damp cloth. Avoid using products containing solvents and/or pure ethyl alcohol.

-Aluminum-metal-glass-melamine-plastic:

We recommend using normal cleaning products for delicate surfaces. Alcohol, solvents and abrasive agents must be avoided.

Sustainability:

Manufacturing materials are 100% recyclable. The used paints do not contain solvents, do not consume water and do not generate emissions or waste. The result is a lower environmental impact.

systemtronic _ Laura

www.st-systemtronic.com

nacional@st-systemtronic.com · export@st-systemtronic.com

tel. 96-1852784 · fax.34-961854482

ASSOCIATED N°00320

AIDIMME
INSTITUTO TECNOLÓGICO

METALMECÁNICO, MUEBLE, MADERA, EMBALAJE Y AFINES



Calidad Controlada

Assembly:

