

Bogart armchair code 501 / Frame: natural ash PO Extra Mate / Seat: double wave, natural paper cord



# Bogart Collection

– by Manel  
Molina Studio

La colección Bogart diseñada por Estudi Manel Molina propone una relectura en clave contemporánea de la tradicional silla de enea y rinde homenaje a la tipología con la que Vergés empezó su trayectoria en la década de los años 70.

Madera, enea, artesanía, tradición son materiales y conceptos que juntos definen el arquetipo de la silla mediterránea por excelencia, una pieza icónica presente en nuestra memoria colectiva, una silla auténtica y cercana.

Bogart collection designed by Manel Molina Studio is a contemporary rereading of the traditional enea chair, which pays homage to the typology used in the beginning of Vergés career in the 1970s.

Wood, enea, artisanal, tradition... are materials and concepts that together define the archetype of the Mediterranean chair for excellence, an iconic piece present in our collective memory, an authentic and close chair.



P44 P.45 Bogart armchair code 501 / Frame: Lacquered ash RAL 7044 PO Extra Mate / Seat: quadruple weave, natural paper cord



Según su contexto de uso está disponible en diversos materiales y acabados.

El asiento de cuerda de papel es fruto de un proceso totalmente artesanal realizado por manos expertas que requiere tiempo y oficio para conseguir un acabado de calidad.

According to its context of use is available in various materials and finishes. The paper cord seat is the result of a totally handmade process carried out by expert hands that requires time and craft to achieve a high quality finish.





1. Bogart armchair code 501 / Frame: natural ash PO Extra Mate / Seat: double weave, natural paper cord
2. Bogart armchair code 501 / Frame: lacquered oak RAL 9004 PO Extra Mate / Seat and backrest: upholstered Gabriel Fame 60999
3. Bogart chair code 500 / Frame: lacquered ash RAL 9004 PO Extra Mate / Seat: quadruple weave, black paper cord



1. Bogart armchair code 501 / Frame: lacquered oak RAL 9004 PO Extra Mate / Seat and backrest: upholstered Gabriel Fame 60999
2. Bogart chair code 500 / Frame: lacquered ash RAL 9004 PO Extra Mate / Seat: quadruple weave, black paper cord







1. Bogart chair code 500 / Frame: lacquered ash RAL 5004 PO Extra Mate / Seat: wrapping with recycled leather H55F Nuit  
2. Bogart armchair code 501 / Frame: Natural ash PO Extra Mate / Seat: double weave, natural paper cord

Bogart es una silla atemporal, robusta y confortable que se presenta en estructura de roble o fresno y en sus versiones con y sin brazos.

Bogart is a timeless, sturdy and comfortable chair that comes in oak or ash structure as its versions with or without arms.





1. Bogart chair code 500 / Frame: natural ash PO Extra Mate / Seat: double weave, natural paper cord
2. Bogart chair code 500 / Frame: lacquered oak RAL 7044 PO Extra Mate / Seat: wrapping with acrylic tape Mineral F206
3. Bogart chair code 500 / Frame: lacquered ash RAL 5004 PO Extra Mate / Seat: wrapping with recycled leather H55F Nuit

3



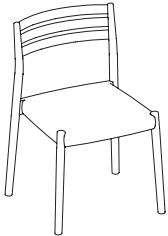


P. 56/57 Bogart armchair code 501 / Frame: natural oak PO Mate / Seat: wrapping with brown full grain leather



# Bogart Collection by Manel Molina Studio

## Modelos / Models



500

### Estructura

Estructura apilable en madera de fresno o roble macizo, acabados en color natural, tintados o lacados a poro abierto.

### Acabados disponibles

1. Asiento en cuerda de papel de Ø3mm color natural o negro, tejido en pasadas de 2 o 4.
2. Asiento en cintas de poliéster acrílico teñido, de 2mm de espesor.
3. Asiento en cintas de cuero reciclado de 2mm.
4. Asiento en cintas de cuero natural plena flor, de 3mm de espesor.
5. Asiento espumado y tapizado sobre cinchas elásticas. En esta opción también se ofrece la posibilidad de tapizar el respaldo.

### Peso

6 kg/u

### Volumen caja

2 u. 58x 68 x 89 cm

### Frame

Stackable structure in ash wood or solid oak, finishes in natural colour, stained or laquered open pore.

### Available finishes

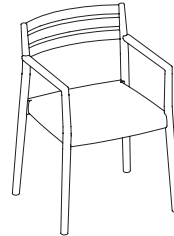
1. Seat in natural or black paper rope of Ø3mm, woven in passes of 2 or 4.
2. Seat in dyed acrylic polyester ribbons, 2mm thick.
3. Seat in recycled leather ribbons, 3mm thick.
4. Seat in full grain leather ribbons, 3mm thick.
5. Seat foamed and upholstered in elastic straps. This option also offers the possibility of upholster the backrest.

### Weight

6 kg/u

### Volumetric Packaging

2 u. 58x 68 x 89 cm



501

### Estructura

Estructura en madera de fresno o roble macizo, acabados en color natural, tintados o lacados a poro abierto.

### Acabados disponibles

1. Asiento en cuerda de papel de Ø3mm color natural o negro, tejido en pasadas de 2 o 4.
2. Asiento en cintas de poliéster acrílico teñido, de 2mm de espesor.
3. Asiento en cintas de cuero reciclado de 2mm.
4. Asiento en cintas de cuero natural plena flor, de 3mm de espesor.
5. Asiento espumado y tapizado sobre cinchas elásticas. En esta opción también se ofrece la posibilidad de tapizar el respaldo.

### Peso

7 kg/u

### Volumen caja

1 u. 58 x68x 89cm

### Frame

Structure in ash or solid oak wood, natural color finishes, stained or lacquered open pore.

### Available finishes

1. Seat in natural or black paper rope of Ø3mm, woven in passes of 2 or 4.
2. Seat in dyed acrylic polyester ribbons, 2mm thick.
3. Seat in recycled leather ribbons, 3mm thick.
4. Seat in full grain leather ribbons, 3mm thick.
5. Seat foamed and upholstered in elastic straps. This option also offers the possibility of upholster the backrest.

### Weight

7 kg/u

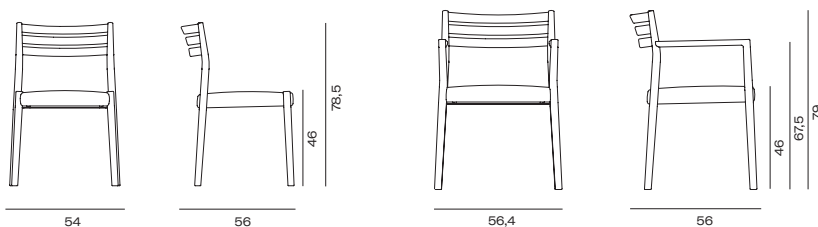
### Volumetric Packaging

1 u. 58 x68x 89cm

## Certificados / Certificates

Modelo / Model 500. 1st Level EN 16139:2013.

## Medidas / Dimensions



## Estructura / Frame

Madera / Wood



Roble Natural /  
Natural Oak

Fresno Natural /  
Natural Ash

Fresno / Ash  
5004 PO

Fresno / Ash  
8023 PO

Fresno / Ash  
9004 PO

Fresno / Ash  
7044 PO

Fresno / Ash  
7030 PO

Fresno / Ash  
7039 PO

## Tipología tejido con cuerda / Typology woven with rope

## Opciones color cuerda / Rope colour options



2 pasadas /  
2 passes



4 pasadas /  
4 passes



Natural



Negro / Black

## Encintado / Wrapping

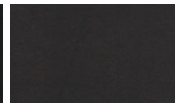
con cuero reciclado / with recycled leather



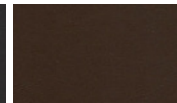
Aplicación /  
Application



Negro



Nuit



Marrón



Cuero



Vaqueta

## Encintado / Wrapping

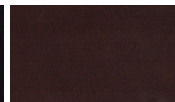
con cuero natural plena flor / with full grain leather



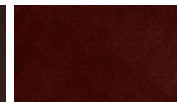
Aplicación /  
Application



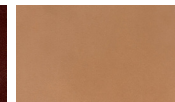
Negro



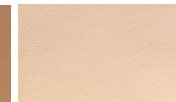
Marrón



Coñac



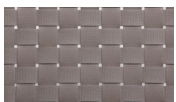
Caramelo



Natural

## Encintado / Wrapping

con cinta acrílica / with acrylic tape



Aplicación /  
Application



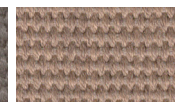
Piedra



Grafito



Mineral

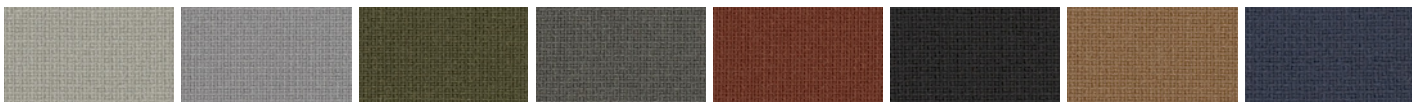


Integral

## Tapizado / Upholstery

Textiles (poliéster y lana) / Fabrics (polyester & wool), Gabriel – Go Uni & Fame.

Piel Natural / Natural leather, Penelopeoggi – Nuvola



Fame  
61136

Fame  
60078

Fame  
61134

Fame  
61060

Fame  
63076

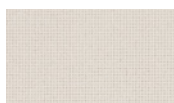
Fame  
60999

Fame  
60999

Fame  
66061



Fame  
68004



Go Uni  
61138



Go Uni  
60093



Go Uni  
60083



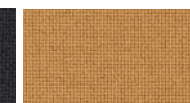
Go Uni  
60084



Go Uni  
61144



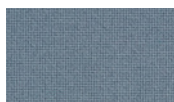
Go Uni  
60999



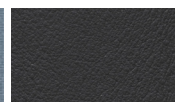
Go Uni  
61143



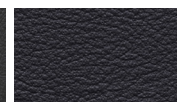
Go Uni  
61145



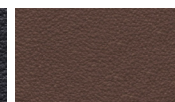
Go Uni  
60081



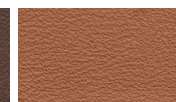
PO141  
Antracite



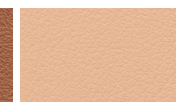
PO205  
Notte



PO175  
Bruno



PO131  
Cuoio



PO151  
Pesca