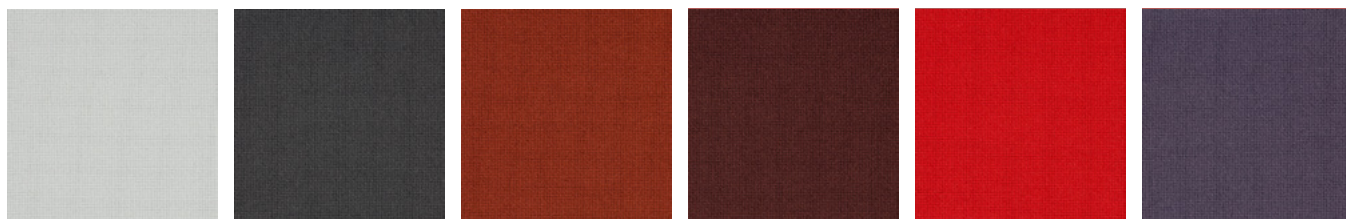


GO UNI

Gabriel®



60093

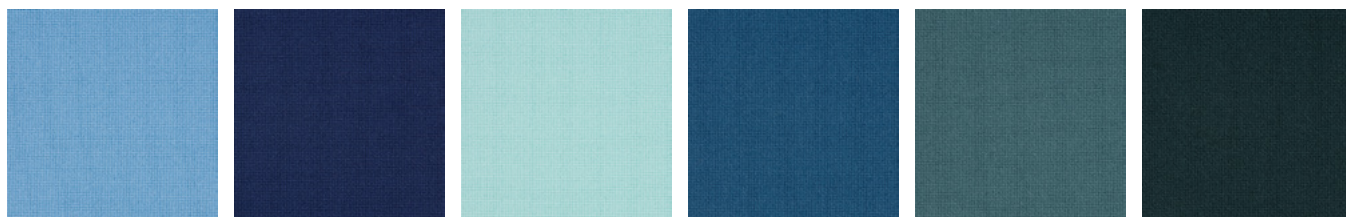
60084

61144

61145

64171

65086



66135

66138

68168

66139

67071

68149

Disponible toda la colección GO UNI GABRIEL. [Online](#) / [Download](#)
Para más información consultar con info@omelette-ed.com

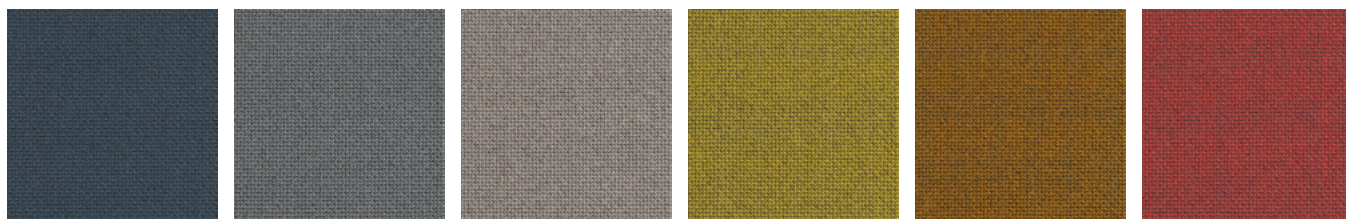
All GO UNI GABRIEL collection is available. [Online](#) / [Download](#)
For more information contact info@omelette-ed.com



Composition	100% Trevira cs
Weight	435 g/lm
Abrasion	Rubs martindale (EN ISO 12947-2) 100,000
Resistance	Double rubs wyzenbeek (ASTM D4157-07) (heavy duty upholstery) 60,000
Flammability	BS 7176 Medium hazard BS 5852 Crib 5 BS 5852 Part 1 0,1 Cigarette & match BS EN 1021-1 Cigarette BS EN 1021-2 Match
Maintenance	Wash or dry cleaning

CURA

Gabriel®



66166

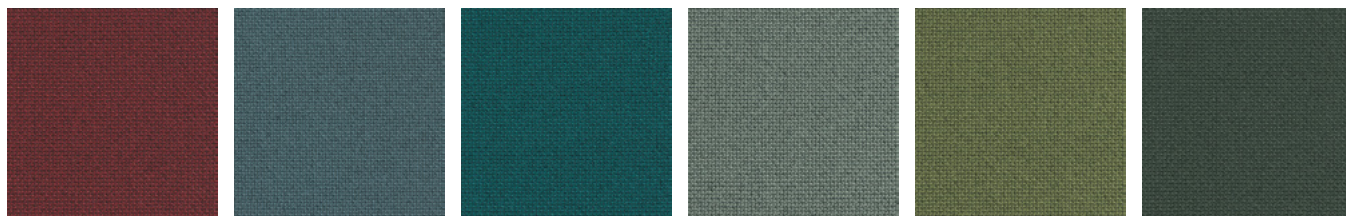
60110

61168

62084

62082

64197



64196

68187

67084

68186

68181

68182

Disponible toda la colección CURA GABRIEL. [Online](#) / [Download](#)
Para más información consultar con info@omelette-ed.com

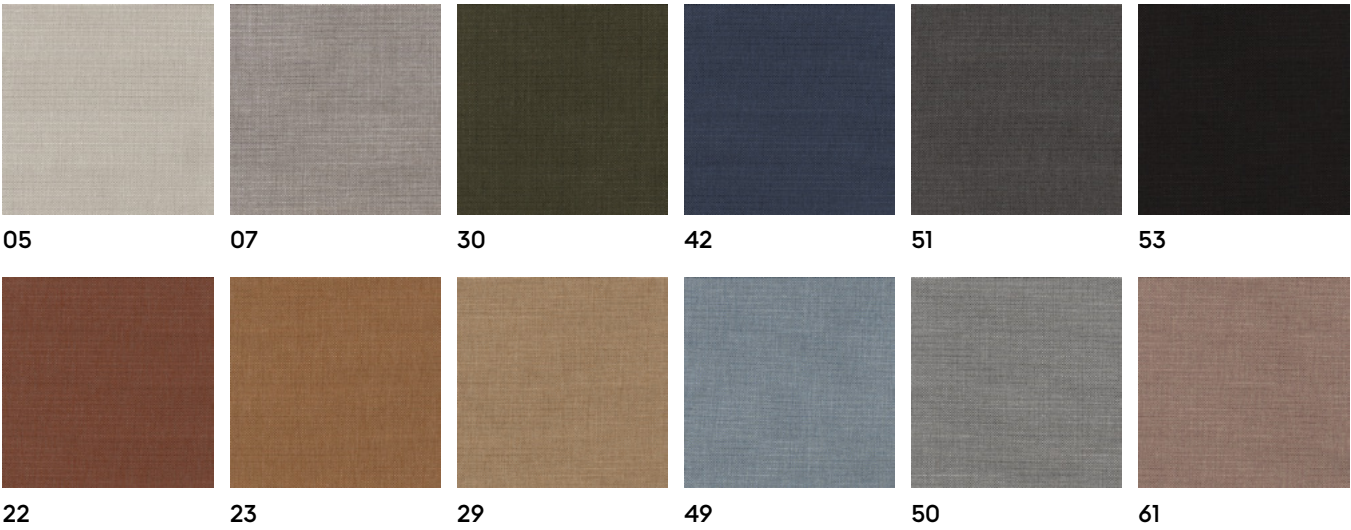
All CURA GABRIEL collection is available. [Online](#) / [Download](#)
For more information contact info@omelette-ed.com



Composition	98% post-consumer recycled polyester / 2% polyester
Weight	420 g/lm
Abrasion	Rubs martindale (EN ISO 12947-2) 100,000
Resistance	Double rubs wyzenbeek (ASTM D4157-07) (heavy duty upholstery) 100,000
Flammability	BS EN 1021 1&2 Cigarette and Match BS 5852 Part 1 0,1 Cigarette & match CA TB 117-2013
Maintenance	Wash or dry cleaning

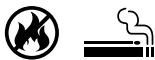
LIBRA

crevin



Disponible toda la colección LIBRA CREVIN. [Online](#) / [Download](#)
Para más información consultar con info@omelette-ed.com

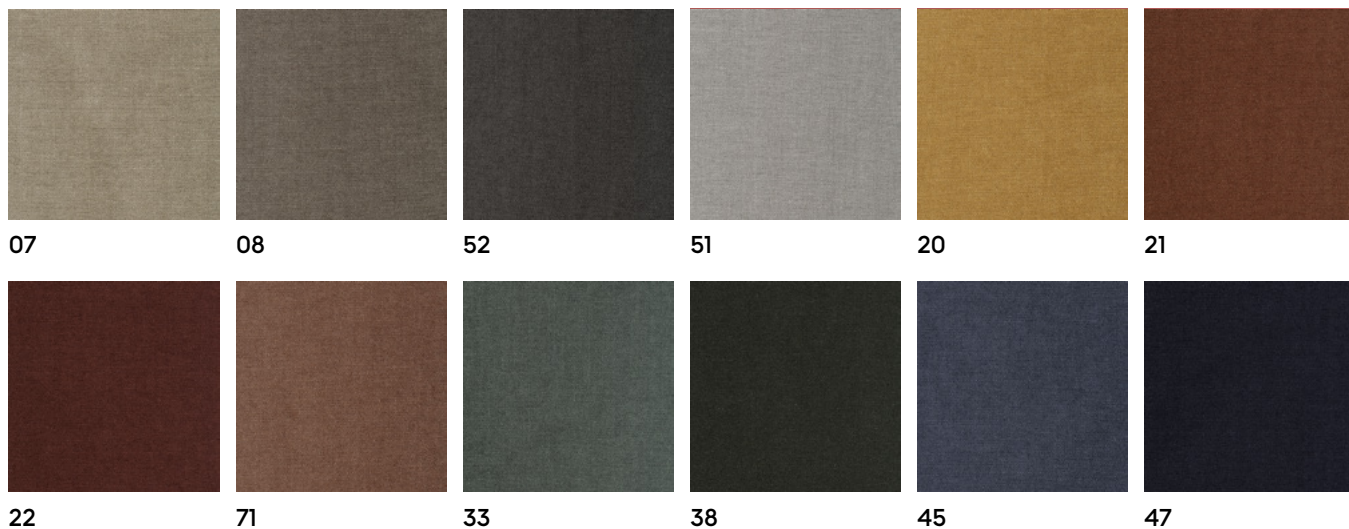
All LIBRA CREVIN collection is available. [Online](#) / [Download](#)
For more information contact info@omelette-ed.com



Composition	50%PP 32%PES 18%CO
Weight	616 gr/lm
Abrasion Resistance	EN ISO 12947-2:1998 66.000
Flammability	B BS5852 Source 0 EN 1021 Part 1 NFPA 260 CAL TB-117
Maintenance	Wash or dry cleaning

VELVETY

crevin



Disponible toda la colección VELVETY CREVIN. [Online](#) / [Download](#)
Para más información consultar con info@omelette-ed.com

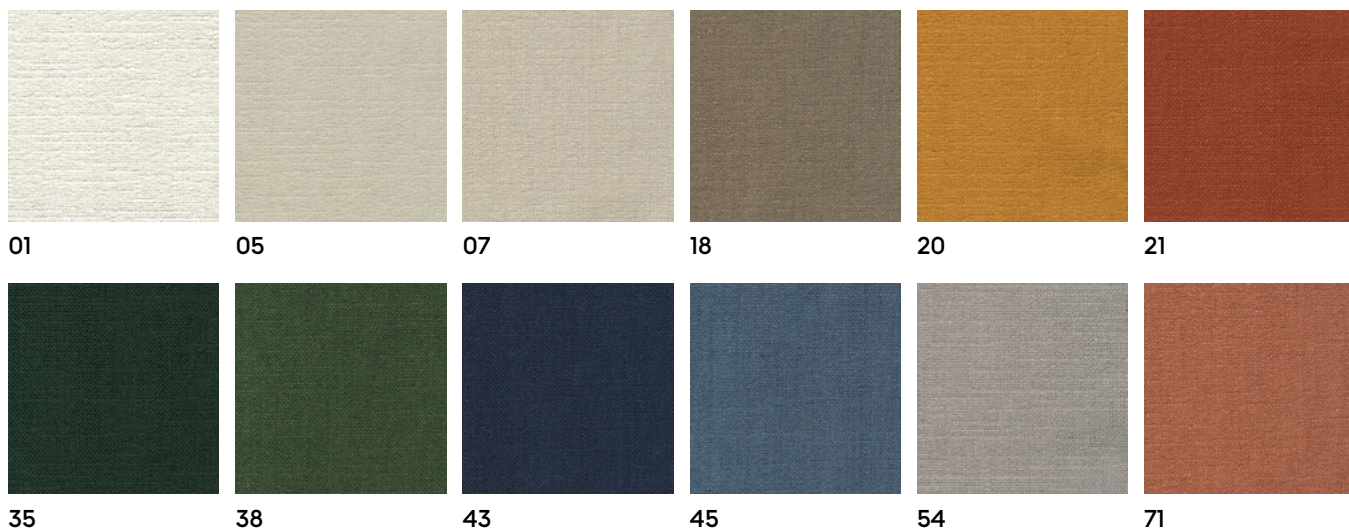
All VELVETY CREVIN collection is available. [Online](#) / [Download](#)
For more information contact info@omelette-ed.com



Composition	91%PES 9%CO
Weight	780 gr/ml
Abrasion	EN ISO 12947-2:1998
Resistance	End point 200,000
Assesment of ignitability	(Cigarette / Match) BS5852 Source 0 EN 1021 Part 1 NFPA 260 CAL TB-117
Maintenance	Wipe clean with a damp cloth

NOAH

crevin



Disponible toda la colección NOAH CREVIN.
Para más información consultar con info@omelette-ed.com

All NOAH CREVIN collection is available.
For more information contact info@omelette-ed.com



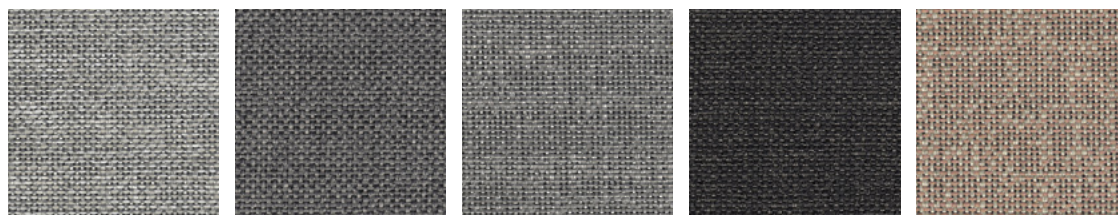
Composition	100%PES REC
Weight	760 gr/ml
Abrasion	EN ISO 12947-2:1998
Resistance	End point >100.000
Assesment of ignitability	(Cigarette) PASS BS5852 Source 0 EN 1021 Part 1 NFPA 260 CAL TB-117
Maintenance	Wipe clean with a damp cloth

SACCO

crevin



05 07 11 26 32 49



50 51 54 59 71

Disponible toda la colección SACCO CREVIN. [Online](#) / [Download](#)
Para más información consultar con info@omelette-ed.com

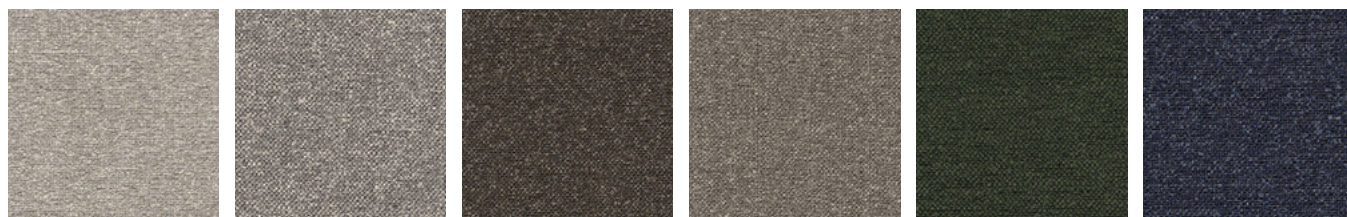
All SACCO CREVIN collection is available. [Online](#) / [Download](#)
For more information contact info@omelette-ed.com



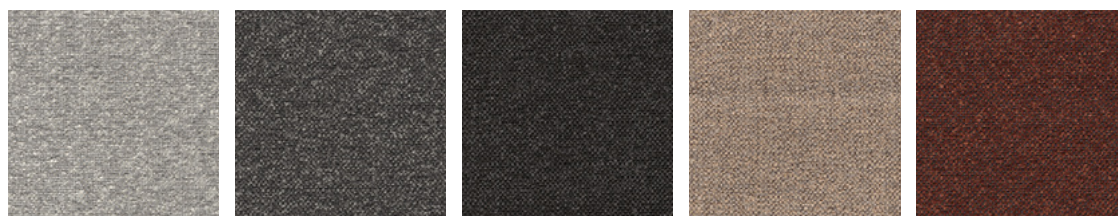
Composition	80%PP 15%PES 5%CO
Weight	800 gr/ml
Abrasion Resistance	EN ISO 12947-4:1998 End point 80.000
Assesment of ignitability	(Cigarette and Match) PASS BS5852 Source 0 EN 1021 Part 1 NFPA 260 CAL TB-117
Maintenance	Wipe clean with a damp cloth

ITO

crevin



05 11 12 18 38 45



51 52 53 71 21

Disponible toda la colección ITO CREVIN. [Online](#) / [Download](#)
Para más información consultar con info@omelette-ed.com

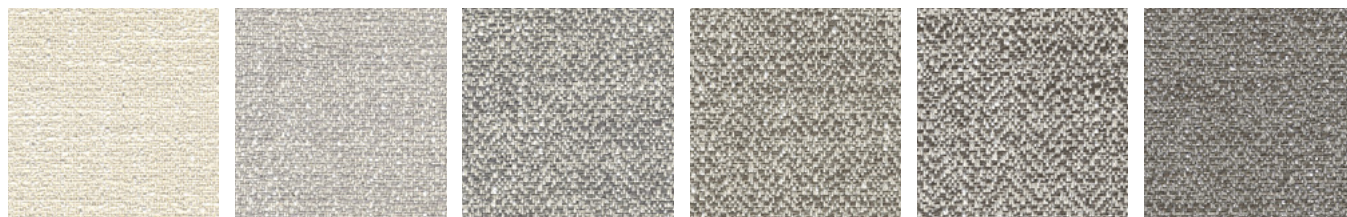
All ITO CREVIN collection is available. [Online](#) / [Download](#)
For more information contact info@omelette-ed.com



Composition	71%PES 20%PP 9%CO
Weight	812 gr/ml
Abrasion Resistance	EN ISO 12947-2:1998 End point >100.000
Assesment of ignitability	(Cigarette / Match) PASS BS5852 Source 0 EN 1021 Part 1 NFPA 260 CAL TB-117
Maintenance	Wipe clean with a damp cloth

DANA

crevin



05

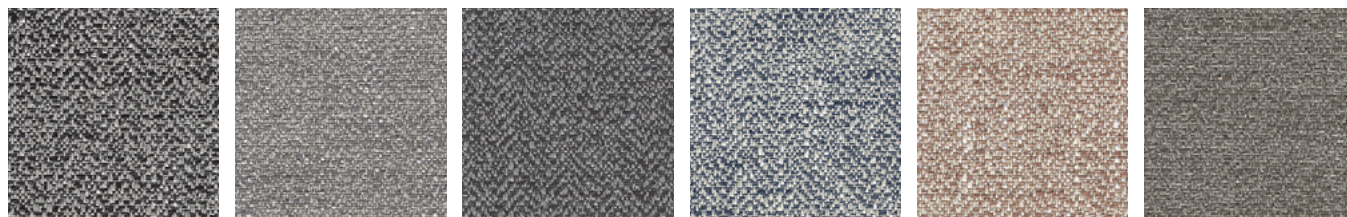
07

51

04

08

11



03

54

53

49

61

70

Disponible toda la colección DANA CREVIN. [Online](#) / [Download](#)
Para más información consultar con info@omelette-ed.com

All DANA CREVIN collection is available. [Online](#) / [Download](#)
For more information contact info@omelette-ed.com



Composition

45%CO 30%CV 25%PES
Stain repellence protection

Weight

775 gr/ml

Abrasion

EN ISO 12947-2:1998

Resistance

End point 26.000

Assesment of

ignitability

(Cigarette) PASS

BS5852 Source 0

EN 1021 Part 1

NFPA 260

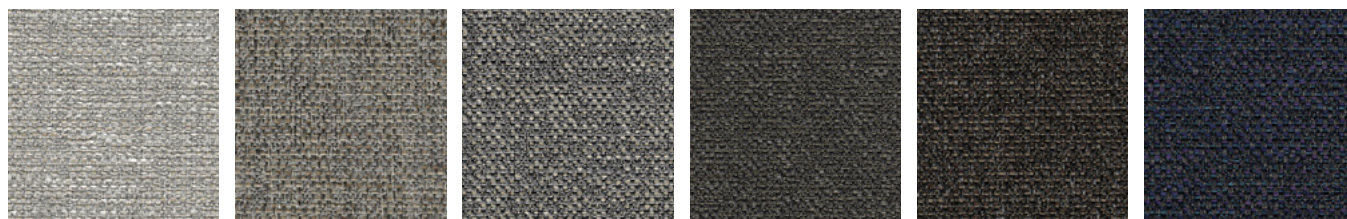
CAL TB-117

Maintenance

Wipe clean with a damp cloth

GAUDI

crevin



02

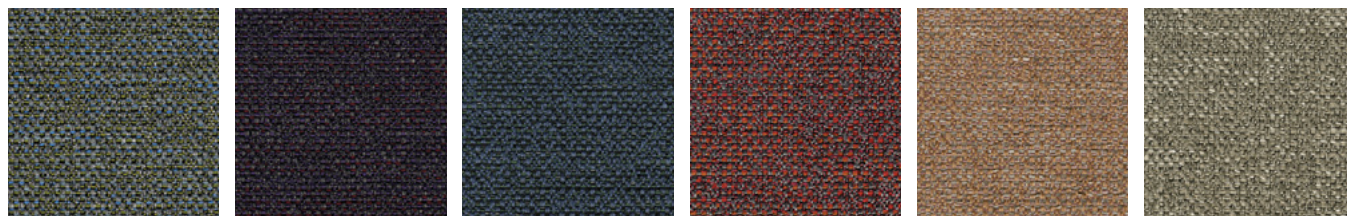
12

51

52

14

46



30

48

45

60

29

10

Disponible toda la colección GAUDI CREVIN. [Online](#) / [Download](#)
Para más información consultar con info@omelette-ed.com

All GAUDI CREVIN collection is available. [Online](#) / [Download](#)
For more information contact info@omelette-ed.com



Composition

60%PP 35%PES 5%CO

Weight

680 gr/lm

Abrasion

EN ISO 12947-2:1998

Resistance

End point 46.000

Assesment of

ignitability

(Cigarette) PASS

BS5852 Source 0

EN 1021 Part 1

NFPA 260

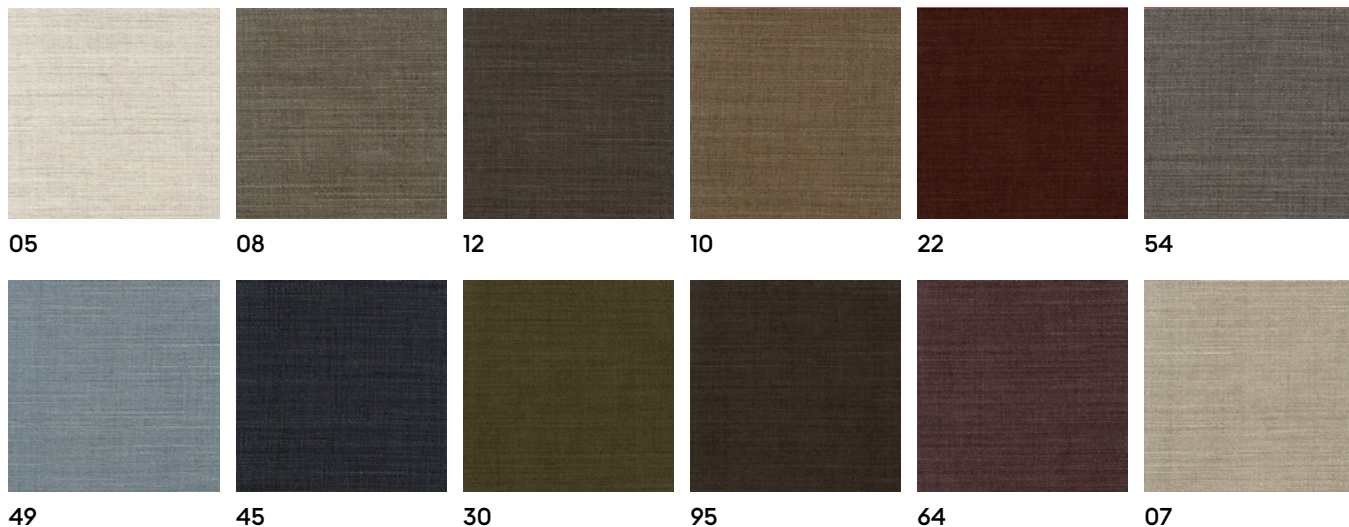
CAL TB-117

Maintenance

Wipe clean with a damp cloth

MATISS

crevin



Disponible toda la colección MATISS CREVIN. [Online](#) / [Download](#)
Para más información consultar con info@omelette-ed.com

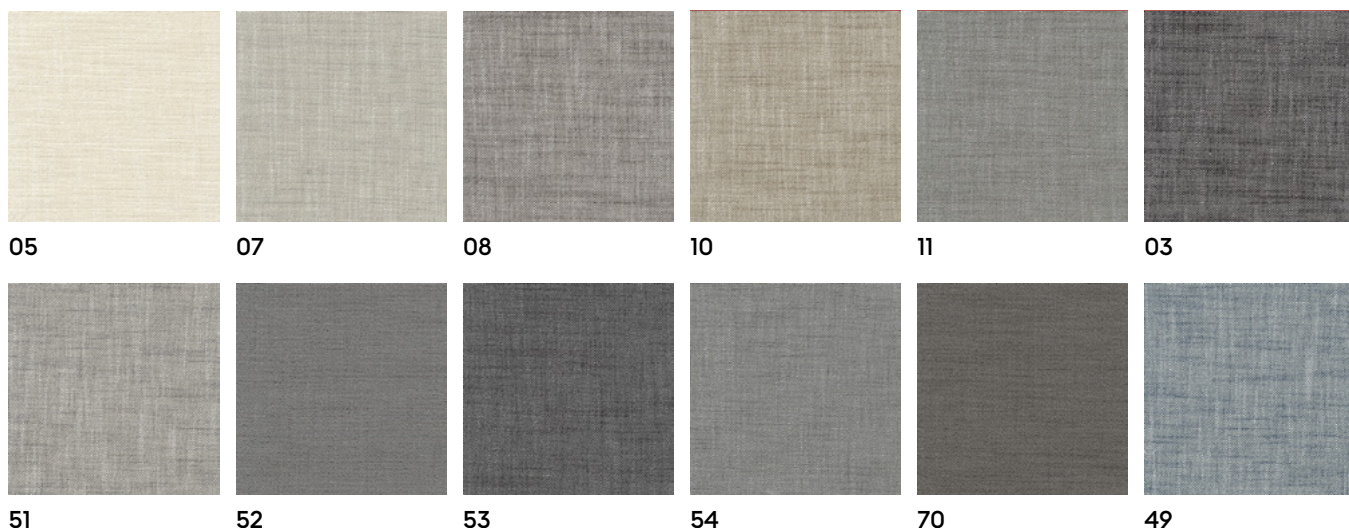
All MATISS CREVIN collection is available. [Online](#) / [Download](#)
For more information contact info@omelette-ed.com



Composition	55%PES 20%CV 15%CO 10%LI
Weight	770 gr/ml
Abrasion	EN ISO 12947-2:1998
Resistance	End point 35.000
Assesment of ignitability	(Cigarette) PASS BS5852 Source 0 EN 1021 Part 1 NFPA 260 CAL TB-117
Maintenance	Wipe clean with a damp cloth

TENZO

crevin



Disponible toda la colección TENZO CREVIN. [Online](#) / [Download](#)
Para más información consultar con info@omelette-ed.com

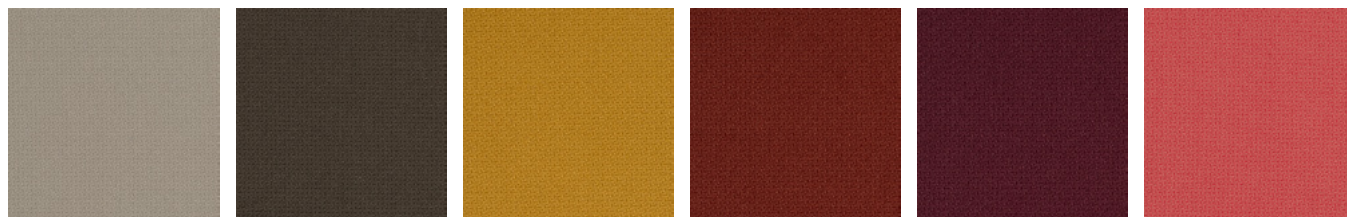
All TENZO CREVIN collection is available. [Online](#) / [Download](#)
For more information contact info@omelette-ed.com



Composition	45%CO 30%CV 25%PES
Weight	Stain repellence protection 775 gr/ml
Abrasion	EN ISO 12947-2:1998
Resistance	End point 25.000
Assesment of ignitability	(Cigarette / Match) PASS BS5852 Source 0 EN 1021 Part 1 NFPA 260 CAL TB-117
Maintenance	Wipe clean with a damp cloth

STEP

Gabriel



61149

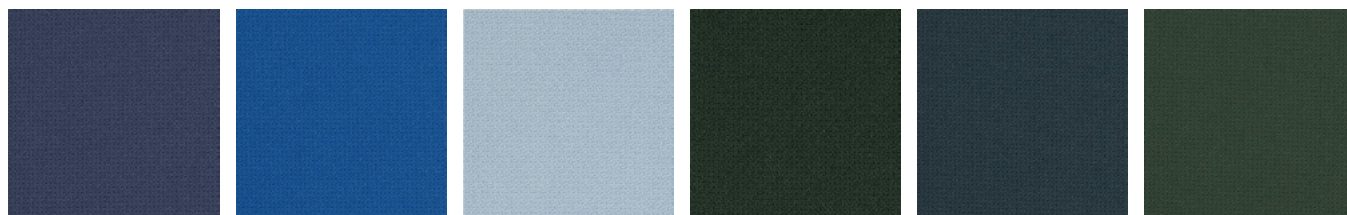
61150

62057

63075

64159

64178



66148

66151

67004

68121

68158

68161

Disponible toda la colección STEP GABRIEL. [Online](#) / [Download](#)
Para más información consultar con info@omelette-ed.com

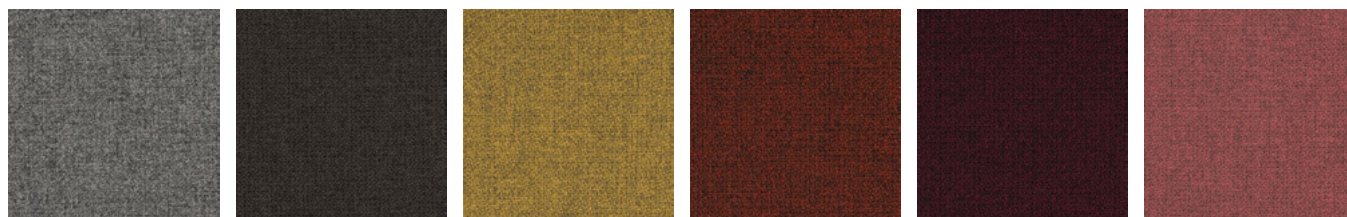
All STEP GABRIEL collection is available. [Online](#) / [Download](#)
For more information contact info@omelette-ed.com



Composition	100% Trevira cs
Weight	470 g/lm
Abrasion	Rubs martindale (EN ISO 12947-2) 100,000
Resistance	Double rubs wyzenbeek (ASTM D4157-07) (heavy duty upholstery) 100,000
Flammability	IMO MSC 307(88) Annex 1 part 8 MED Certificate IMO / DIN 4102 B1 NFP 92-503/504/505 M1 BS EN 1021 1&2 Cigarette and Match BS EN 1021-1 Cigarette BS 5852 Part 1 0,1 Cigarette & match
Maintenance	Wash or dry cleaning

STEP MELANGE

Gabriel



61149

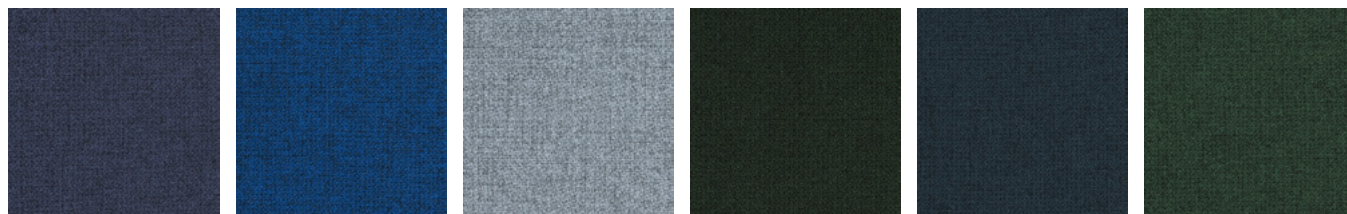
61150

62057

63075

64159

64178



66148

66151

67004

68121

68158

68161

Disponible toda la colección STEP MELANGE GABRIEL [Online](#) / [Download](#)
Para más información consultar con info@omelette-ed.com

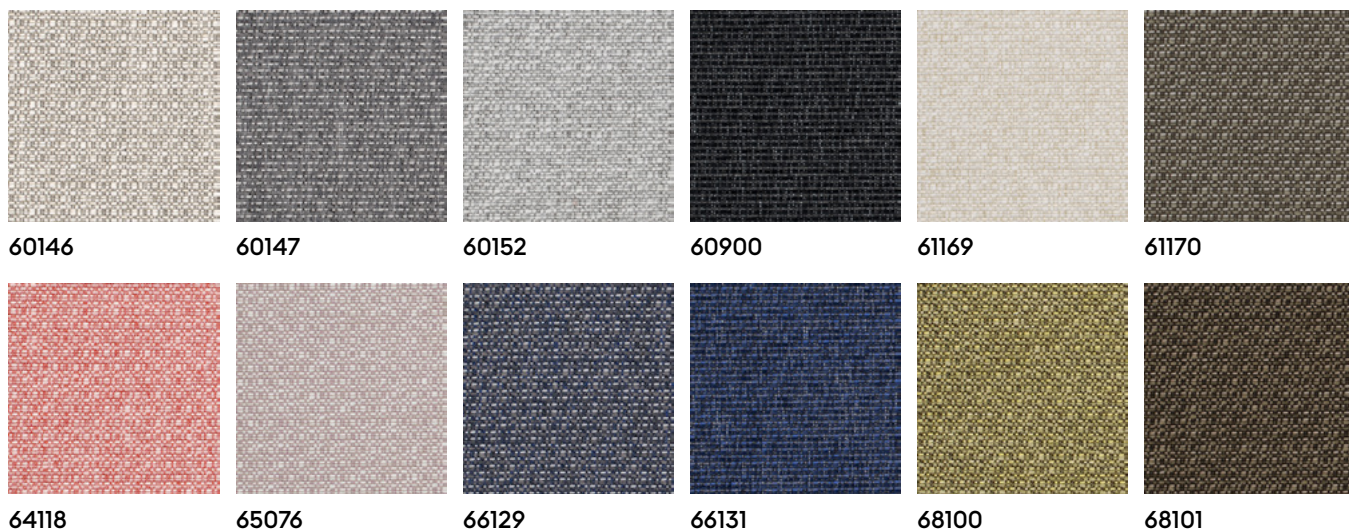
All STEP MELANGE GABRIEL collection is available. [Online](#) / [Download](#)
For more information contact info@omelette-ed.com



Composition	100% Trevira cs
Weight	470 g/lm
Abrasion	Rubs martindale (EN ISO 12947-2) 100,000
Resistance	Double rubs wyzenbeek (ASTM D4157-07) (heavy duty upholstery) 100,000
Flammability	IMO MSC 307(88) Annex 1 part 8 MED Certificate IMO / DIN 4102 B1 NFP 92-503/504/505 M1 BS EN 1021 1&2 Cigarette and Match BS EN 1021-1 Cigarette BS 5852 Part 1 0,1 Cigarette & match
Maintenance	Wash or dry cleaning

TEMP

Gabriel



Disponible toda la colección TEMP GABRIEL. [Online](#) / [Download](#)
Para más información consultar con info@omelette-ed.com

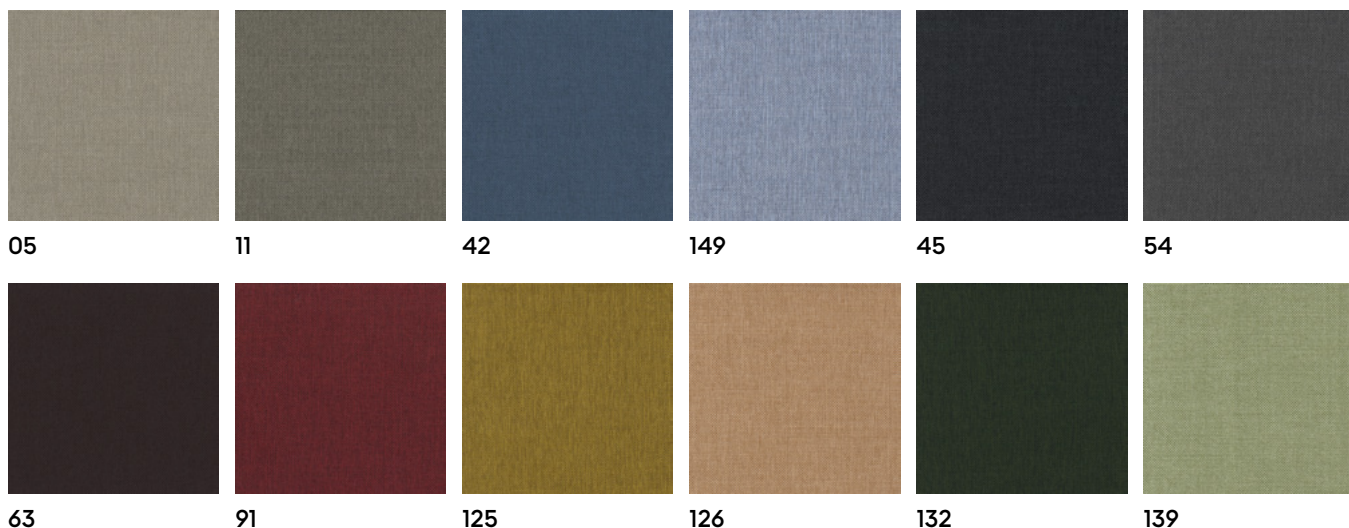
All TEMP GABRIEL collection is available. [Online](#) / [Download](#)
For more information contact info@omelette-ed.com



Composition 100% polyester
Weight 504 gr/ml
Abrasion EN ISO 12947-2:1998
Resistance End point 90,000
Assesment of ignitability BS EN 1021 1&2 Cigarette and Match
CA TB 117-2013
Will also pass other flammability standards.
Flame retardant performance is dependent upon the foam used.
Contains no flame retardant chemicals.
Maintenance Wipe clean with a damp cloth

FUSION

crevin



Disponible toda la colección FUSION CREVIN. [Online](#) / [Download](#)
Para más información consultar con info@omelette-ed.com

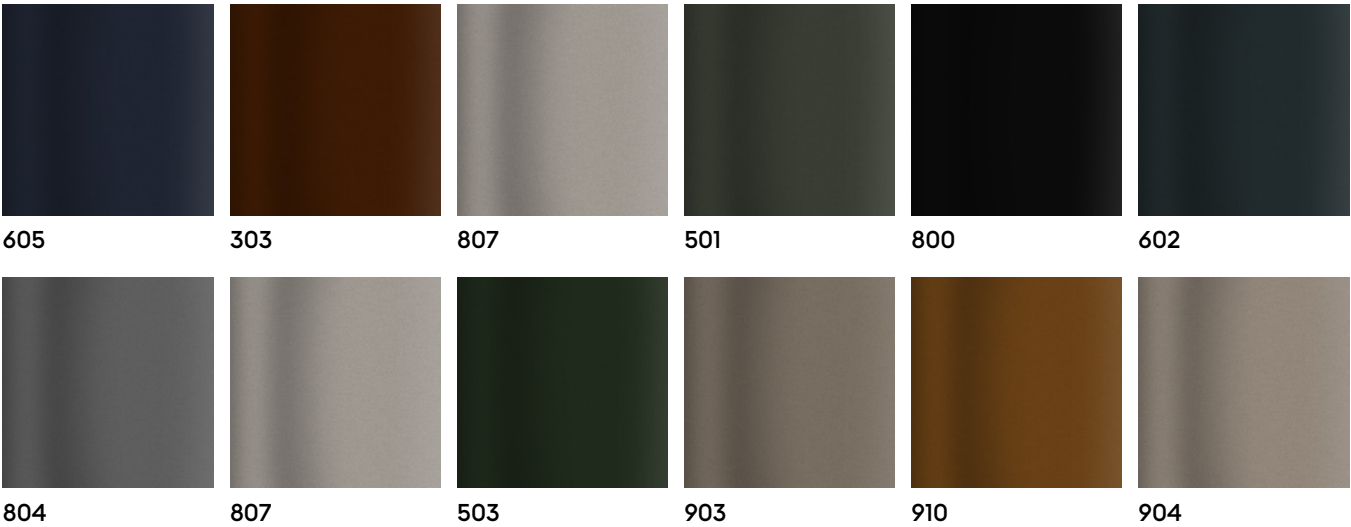
All FUSION CREVIN collection is available. [Online](#) / [Download](#)
For more information contact info@omelette-ed.com



Composition 34%WO 28%PES 23%PP 15%CO
Weight 750 gr/ml
Abrasion EN ISO 12947-2:1998
Resistance End point 200,000
Assesment of ignitability BS5852 0/1
EN 1021 1/2
BS7176 Low hazard
CAL TB117:sect 1 2013
NFPA 260:2013
Maintenance Wipe clean with a damp cloth

KRONOS TERCIOPELO VELVET

GRUPO LAMADRID



Disponible toda la colección KRONOS GRUPO LAMADRID. Online / Download
Para más información consultar con info@omelette-ed.com

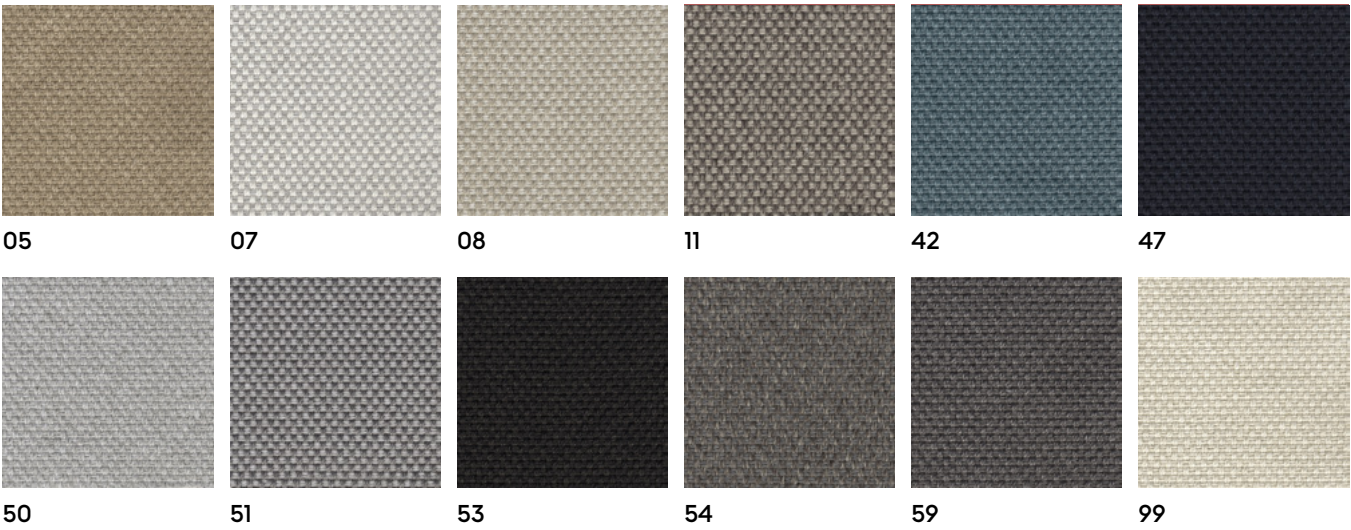
All KRONOS GRUPO LAMADRID collection is available. Online / Download
For more information contact info@omelette-ed.com

Composition 92% PE, 5% Cot. and 3% Latex
Weight 470 g/lm
Abrasion Rubs martindale (EN ISO 12947-2) 100,000
Resistance
Flammability

Maintenance Wash or dry cleaning

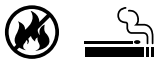
BORA BORA

crevin



Disponible toda la colección BORA BORA CREVIN. [Online](#) / [Download](#)
Para más información consultar con info@omelette-ed.com

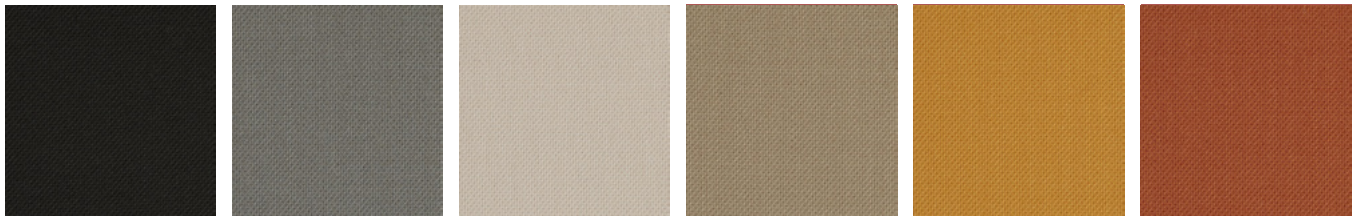
All BORA BORA CREVIN collection is available. [Online](#) / [Download](#)
For more information contact info@omelette-ed.com



Composition	82%PP 18%PES
Weight	1050 gr/ml
Abrasion Resistance	>100.000
Assesment of ignitability	BS5852 0/1 EN 1021 1/2 BS7176 Low hazard CAL TB117:sect 1 2013 NFPA 260:2013 IMO FTP 2010 Part 8 PASS
Maintenance	Wipe clean with a damp cloth

SELECT

Gabriel



60999

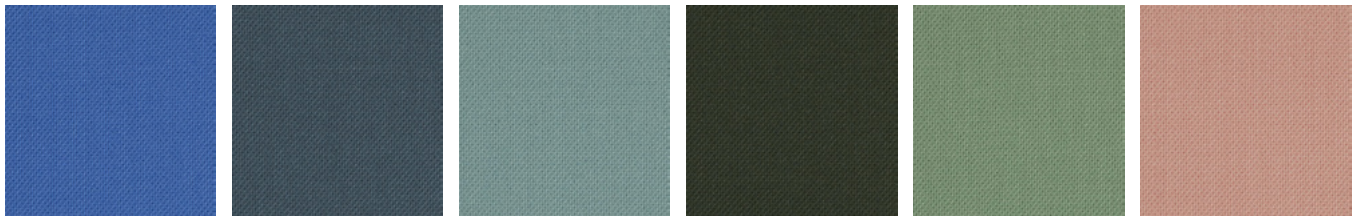
60130

61188

61184

62098

63102



66190

67097

67101

68209

68210

64213

Disponible toda la colección SELECT GABRIEL. [Online](#) / [Download](#)
Para más información consultar con info@omelette-ed.com

All SELECT GABRIEL collection is available. [Online](#) / [Download](#)
For more information contact info@omelette-ed.com



Composition

85% New Zealand wool / 15% polyamide

Weight

510 g/lm

Abrasion

Resistance

Rubs martindale (EN ISO 12947-2) 200,000
rubs martindale (ASTM D4966-02) (heavy duty upholstery) 100,000

Flammability

BS EN 1021-1 Cigarette
BS EN 1021-2 Match
BS 5852 Part 1 0,1 Cigarette & match
BS 5852 Crib 5
IMO MSC 307(88) Annex 1 part 8
MED Certificate IMO

Maintenance

Wash or dry cleaning

CAPTURE

Gabriel



4102

4201

4801

5402

4902

5101



8103

5201

Disponible toda la colección CAPTURE GABRIEL. [Online](#) / [Download](#)
Para más información consultar con info@omelette-ed.com

All CAPTURE GABRIEL collection is available. [Online](#) / [Download](#)
For more information contact info@omelette-ed.com



Composition

85% New Zealand wool / 15% polyamide

Weight

475 g/lm

Abrasion

Resistance

Rubs martindale (EN ISO 12947-2) 200,000
Rubs martindale (ASTM D4966-02) (heavy duty upholstery) 200,000

Flammability

BS EN 1021 1&2 Cigarette and Match
BS 5852 Part 1 0,1 Cigarette & match
Class Uno UNI 9175 Class 1 I EMME
CA TB 117-2013

Maintenance

Wash or dry cleaning