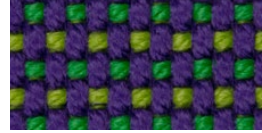


**Glad.** (Group 2)



**Berry 1021**



**Masai 1018**



**Sunset 1020**



**Noa 1026**



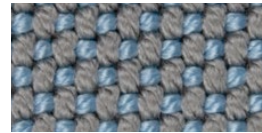
**Pruna 1045**



**Amatista 1011**



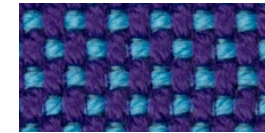
**Galan 1025**



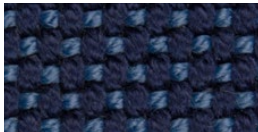
**Perla 1006**



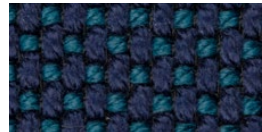
**Eclipse 1023**



**Calipso 1017**



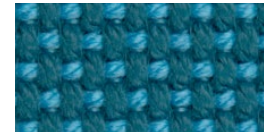
**Night 1024**



**Ultramar 1002**



**Niord 1015**



**Aquamarina 1003**



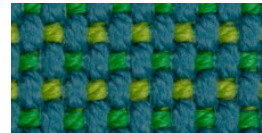
**Esmeralda 1016**



**Bosc 1029**



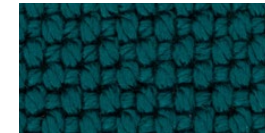
**Artemisa 1027**



**Oceano 1005**



**Caribe 1004**



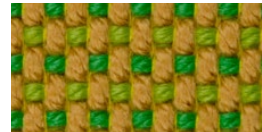
**Turquoise 1053**



**Aguacate 1028**



**Lima 1030**



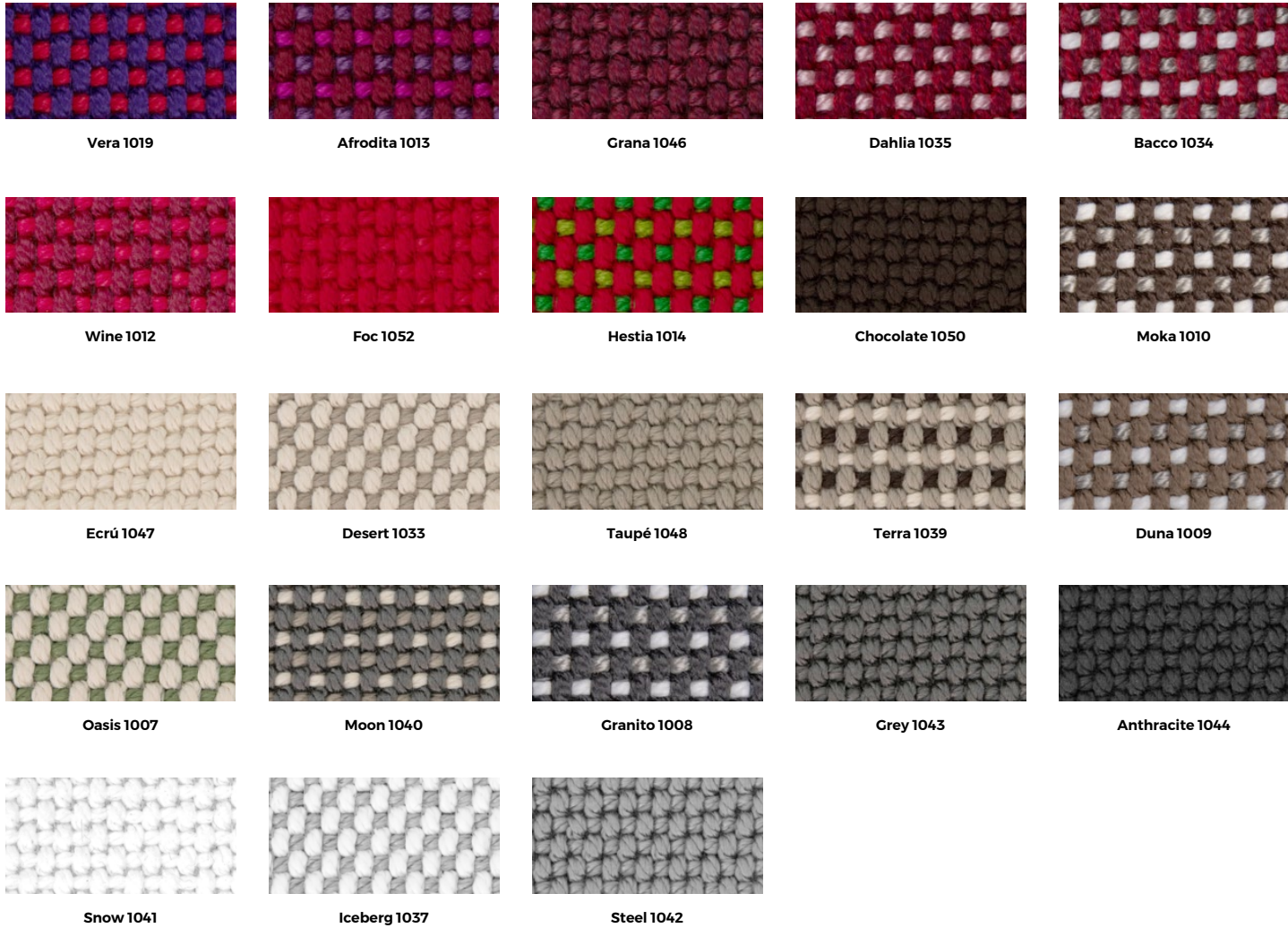
**Delhi 1038**



**Oro 1031**



**Ocre 1051**



FABRIC  
TEJIDO

WEIGHT  
PESO

FLAME RESISTANCE  
RESIST. IGNÍFUGA

RESISTANCE  
ABRASION

COLOR FASTNESS  
SOLIDEZ DEL COLOR

COMPOSITION  
COMPOSICIÓN

MAINTENANCE  
MANTENIMIENTO

SYMBOLS  
SÍMBOLOS

**Glad.**

Impressive outdoor fabric with an elegant thick wave.

975 gr/m<sup>2</sup>

BS5852 (I)

30.000 cycles

Clean using a cotton cloth with neutral soap solution. Rub dry with a clean cloth and let dry.

