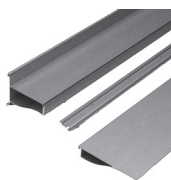


# TECHNICAL SPECIFICATION

## Cornisa Shelving

Lluís Clotet y Oscar Tusquets  
1988



### COMPONENTS, MATERIALS & FINISHES:

15 or 26 cm (6" or 10") / M.L. extruded aluminum shelves. Wide. Extruded aluminum support 15 or 26 cm (6" or 10") / M.L wide. Finishes of the shelves in matt silver anodized, black anodized or white painted RAL9016 matt. Possible rounded edges. \*\* Aluminum extrusion fixing hardware.

### DIMENSIONS & WEIGHT:

Cornice support and shelves:

15cm flat shelf (max. 250cm in one piece),

40x2500x150mm / 4Kg ML

1.6"x 98"x6" / 8.8lbs ML

26cm flat shelf (max 250cm in one piece),

60x2500x560mm / 2.15Kg ML

2.4"x98"x22" / 4.7lbs

Shelves can be cut to size according to customer needs.

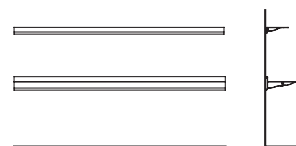
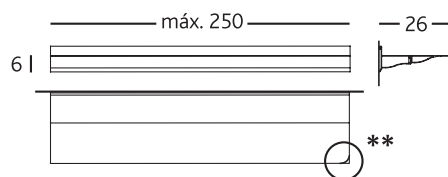
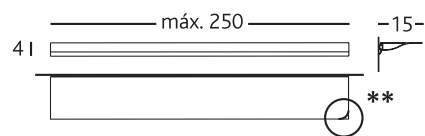
### MAXIMUM LOAD PER SHELF:

- 15cm (6") flat shelf: 35kg / ml (77lbs/ml) of distributed load

- 26cm (10") flat shelf: 20kg / ml (44lbs/ml) of distributed load

### PACKAGING:

The aluminum profiles are packed with air protections in the inside a cardboard box. The product is sold disassembled.



MEASUREMENTS IN CM and INCHES



### Bd Barcelona design

Ramon Turró, 126 / 08005 Barcelona

Tel +34 93 458 69 09 / Fax +34 93 207 36 97

bd@bdbarcelona.com / www.bdbarcelona.com

### Technical department

Carretera Capellades / km 22,750

Narcís Monturiol, 7 / Pol. Ind Sesrovires

Sant Esteve de Sesrovires / 08635 Barcelona

Tel +34 93 771 30 51