

**FLORIDA**  
REF F

RECOMMENDED FOR  
Contract use

COMPOSITION  
Raw hide leather (corrected grain)  
through dyeing aniline

TEAR RESISTANCE  
>20N (UNI EN ISO 3377-1)

CRACK RESISTANCE  
50.000 Cycles (UNI EN ISO 5402)

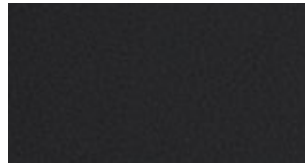
DRY RUB FASTNESS  
1.000 Cycles Vol. >4 Grey scale  
(UNI EN ISO 11640)

LIGHT FASTNESS  
Vol. >6 Blue scale  
(UNI EN ISO 105-B02)

FIRE TEST  
BS 5852-0 - BS 5852-1  
BS5852 CRib5 (optional)  
UNI EN 1021-1  
UNI EN 1021-2  
NFPA 260/UFAC  
California TB 117 Section E -AB-2998



Example: F15 - Camel



F10 - BLACK



F15 - CAMEL



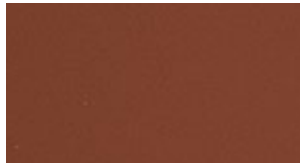
F20 - DARK ORANGE



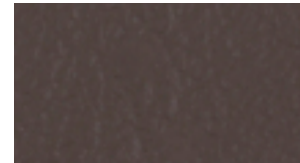
F25 - YELLOW



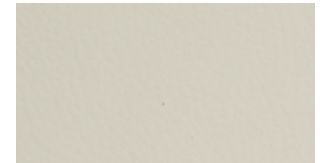
F27 - CHARCOAL GREY



F51 - BROWN



F52 - DARK BROWN



F53 - BEIGE

**PANAMA**  
REF P

RECOMMENDED FOR  
Contract use

COMPOSITION  
Raw hide leather (corrected grain)

TEAR RESISTANCE  
20N (EN3377-1)

CRACK RESISTANCE  
50.000 Cycles (EN ISO 5402)

DRY RUB FASTNESS  
1.000 Cycles / Vol. 5 Grey scale  
(ISO 11640)

WET RUB FASTNESS  
250 Cycles / Vol. 5 Grey scale  
(ISO 11640)

LIGHT FASTNESS  
72 h. exposition / Vol. 5 Grey scale  
(EN ISA 105-B02)

FIRE TEST  
BS 5852-0 - BS 5852-1  
BS5852 CRib5 (optional)  
UNI EN 1021-1  
UNI EN 1021-2  
NFPA 260/UFAC  
California TB 117 Section E - AB-2998



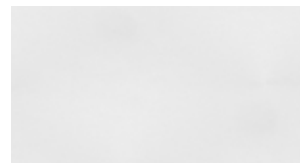
Example: P01 - Sand



P01 - SAND



P10 - BLACK



P04 - WHITE



P15 - DARK BROWN

**RUSTICO NABUK  
(VINTAGE)**  
REF V

RECOMMENDED FOR  
Domestic use

LIGHT FASTNESS  
Vol. >3 Blue scale (EN ISA 105-B02)

COMPOSITION  
NABUK: Through dyeing aniline

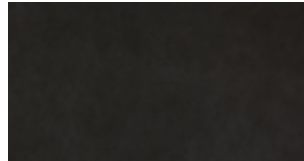
FIRE TEST  
BS 5852-0 - BS 5852-1  
UNI EN 1021-1  
UNI EN 1021-2  
NFPA 260 / UFAC  
FS191 Método S903 - Port Authority of NY  
IMO Resolution A.652 (16)  
California TB 117 Section E - AB-2998

TEAR RESISTANCE  
>20N (UNI EN ISO 3377-1:2012)

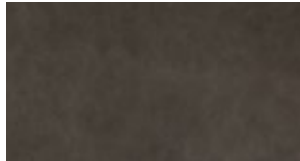
DRY RUB FASTNESS  
50 cycles / Vol. >3 Grey scale  
(ISO 11640)



Example: V10 - Angel Black



V10 - ANGEL BLACK



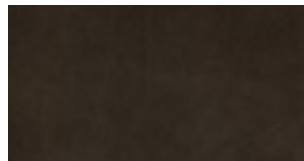
V22 - GREY



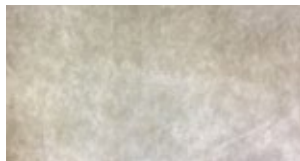
V18 - AGED CAMEL



V23 - SEPIA



V19 - AGED TESTA DI MORO



V24 - ORETA

**DREAM  
(SAUVAGE)**  
REF S

RECOMMENDED FOR  
Domestic use

RESISTANCE TO WATER DROP  
UNI EN ISO 15700 >3 Grey scale

COMPOSITION  
Chrome tanned raw hides.  
Full grain, aniline dyeing.

TEAR RESISTANCE  
>40N UNI EN ISO 3377-2

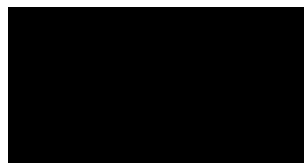
DRY RUB FASTNESS  
150 cycles UNI EN ISO 11640

FIRE TEST  
BS 5852:2006 Cigarette test  
BS 5852:2006 Match test  
UNI EN 1021-1: 2014 Cigarette test  
UNI EN 1021-2: 2014  
California TB117 Section E

WET RUB FASTNESS  
50 cycles UNI EN ISO 11640



Example: S45 - Clay



S40 - BLACK



S46 - ALPINE

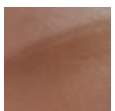


S45 - CLAY



S50 - GRAPEFRUIT

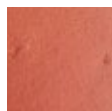
RUSTICO NABUK & DREAM LEATHER IMPERFECTIONS



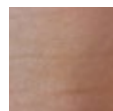
Wrinkles



Scar



Insect bites



Neck folds



Warts

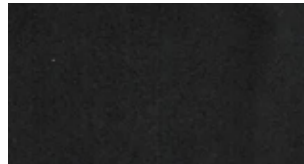
**HIDE**  
REF C

COMPOSITION  
Vegetable tanned cow leather.

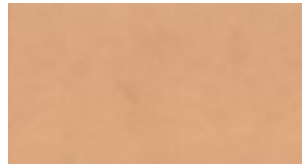
FIRE TEST  
California TB 117-2013 section 1



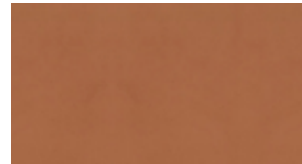
Example: C13 - Natural



C10 - BLACK



C13 - NATURAL



C20 - TOASTED

**FUSION**  
F 900

COMPOSITION  
Chrome tanned full grain European bovine.

TEAR RESISTANCE  
EN 3377-1 > 20N.

DRY RUB FASTNESS  
EN ISO 11640/ EN ISO 11641 >4, 800 cycles

FINISH ADHESION  
ISO 11644 > 2.0N/10MM.

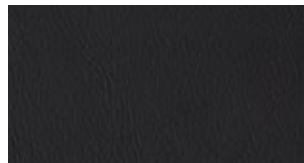
WET RUB FASTNESS  
EN ISO 11640/ EN ISO 11641 >3-4, 200 cycles

FIRE TEST  
UNE EN 1021-1 UNE EN 1021-2.  
OMI MSC:307 (88) Annex 1 Part 8.  
R118/2.

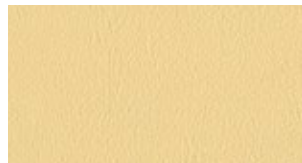
COLOR FASTNESS TO ARTIFICIAL LIGHTEN  
EN ISO 105-B 02 Blue scale > 5



Example: F907 - Cream



F903 - DARK GREY



F907 - CREAM



F930 - DARK RED



F937 - BROWN

**CLUB**  
REF CL

COMPOSITION  
Chrome tanned grain European bull, with anilina finish.

TEAR RESISTANCE  
EN 3377-1 > 20N.

DRY RUB FASTNESS  
EN ISO 11640/ EN ISO 11641 >3, 50 cycles.

FINISH ADHESION  
ISO 11644 > 2.0N/10MM.

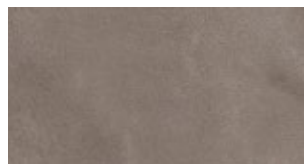
WET RUB FASTNESS  
EN ISO 11640/ EN ISO 11641 >3, 20 cycles.

FIRE TEST  
UNE EN 1021-1 UNE EN 1021-2.  
OMI MSC:307 (88) Annex 1 Part 8.  
R118/2.

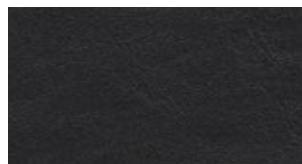
COLOR FASTNESS TO ARTIFICIAL LIGHTEN  
EN ISO 105-B 02 Blue scale > 3



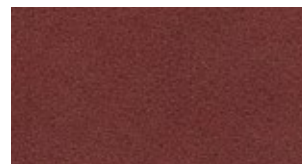
Example: CL02 - Grey



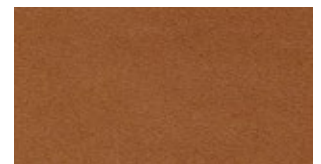
CL02 - GREY



CL03 - BLACK



CL05 - BURGUNDY



CL52 - TOASTED BROWN

---

**CLEANING AND MAINTENANCE****DON'T**

- . Avoid direct light.
- . Avoid sharp objects.
- . Keep away from direct heat.
- . Do not use household cleaners.
- . Do not rub.

**DO**

- . Dust regularly with a soft and dry cloth.
- . Clean with a slightly damp cloth and mild soap. Dry immediately after treatment.
- . Use a light circular motion working toward the center of the stain.
- . To Moisturize the leather we recommend to apply natural neutral creams.

---

**CHARACTERISTICS**

The natural characteristics of leather makes this product uneven as of all products that come from nature. Correcting processes make the leathers surface texture even and consequentially less natural. Grain changes, marks and scars caused during the life of an animal are attributes of fine quality and unaltered leather. Wrinkles, bites or other imperfections cannot be considered as defects in leather, but proof of its high quality.

The wrinkles on the surface are part of the original design. Both the number and size of the wrinkles can vary as natural leathers are being used. The elasticity itself enhances the diversity and variability of the wrinkles.

**LIBRA**  
REF CAT 1

RECOMMENDED FOR  
Contract use

LIGHTFASTNESS  
EN ISO 105-B02:1998 & EN ISO 105 B02/  
A01:2002

COMPOSITION  
50%PP 32%PES 18%CO

COLOUR DEGRADATION  
On blue scale (Scale from 1 worst  
to 8 best): 6-7

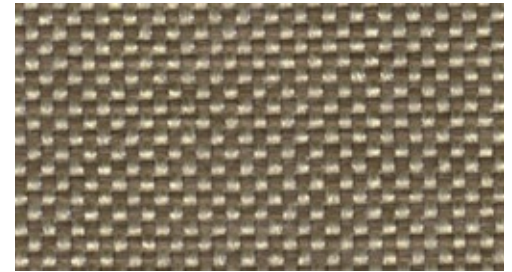
ABRASION RESISTANCE (END POINT)  
EN ISO 12947-2:1998 - 66000

COLOUR FASTNESS TO RUBBING  
(DRY AND WET)  
EN ISO 105-X12:2002  
(Scale from 1 worst to 5 best): 4-5

PILLING RESISTANCE  
EN ISO 12945/2:2000; Modified martindale  
method (2000 and 7000 cycles) (Scale  
from 1 worst to 5 best): 4-5

WASHING CONDITIONS  
☰ △ ☒ ☓ Ⓞ

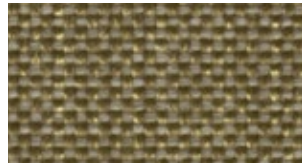
FIRE TEST  
BS 5852 Source 1 (optional)  
EN 1021- part 2:2006 (optional)  
CAL TB 117:2013 California - AB-2998  
NFPA 260:2013  
BS 7176 Low Hazard (optional)  
UNI 9175 Classe 3IM (optional)



Example: BROWN - TL10



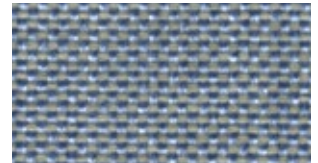
BROWN - TL10



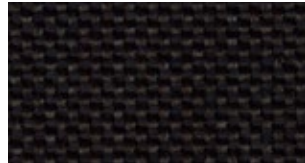
BEIGE - TL20



PALE PINK - TL29



GREY - TL49



DARK BROWN - TL53



PINK - TL62

**IRIS**  
REF CAT 2

RECOMMENDED FOR  
Domestic use

LIGHT FASTNESS  
EN ISO 105-B02:1998 & EN ISO 105 B02/  
A01:2002

COMPOSITION  
41%CO 29%PES 24%PP 6%CV

WATER REPELLENCY  
AATCC 79:2000 (value > 300): 70

ABRASION RESISTANCE (END POINT)  
EN ISO 12947-2:1998 - 32000

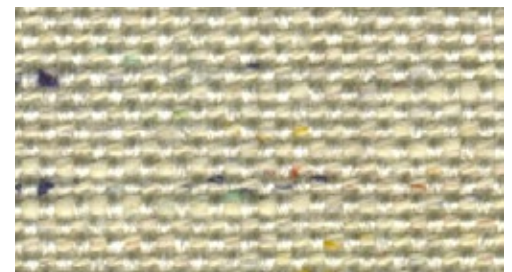
OIL REPELLENCY  
EN ISO 14419:1999 /AC:2006 -  
AATCC 118:2002  
(Scale from 1 worst to 8 best): 5-6

PILLING RESISTANCE  
EN ISO 12945/2:2000; Modified martindale  
method (2000 and 7000 cycles) (Scale  
from 1 worst to 5 best): 4

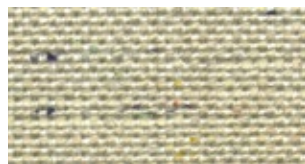
WASHING CONDITIONS  
☰ ☒ ☓ ☓ Ⓞ

FIRE TEST  
BS 5852 Source 1 (optional)  
EN 1021- part 2:2006 (optional)  
CAL TB 117:2013 California - AB-2998  
NFPA 260:2013

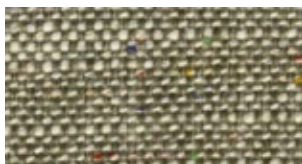
REPELLENCE PROTECTION



Example: BEIGE - T105



BEIGE - T105



GREY - T111



BROWN - T120

**GAUDÍ**  
REF CAT 2

RECOMMENDED FOR  
Domestic & Contract use

COMPOSITION  
60%PP 35%PES 5%CO

ABRASION RESISTANCE (END POINT)  
EN ISO 12947-2:1998 - 46000

PILLING RESISTANCE  
EN ISO 12945/2:2000; Modified martindale method (2000 and 7000 cycles) (Scale from 1 worst to 5 best): 4-5

FIRE TEST  
BS 5852 Source 1 (optional)  
EN 1021- part 2:2006 (optional)  
CAL TB 117:2013 California - AB-2998  
NFPA 260:2013  
BS 7176 Low Hazard (optional)  
UNI 9175 Clase 3IM (optional)

LIGHT FASTNESS  
EN ISO 105-B02:1998 & EN ISO 105 B02/A01:2002

COLOUR DEGRADATION  
On blue scale (Scale from 1 worst to 8 best): 6-7

COLOUR FASTNESS TO RUBBING (DRY AND WET)  
EN ISO 105-X12:2002  
(Scale from 1 worst to 5 best): 4-5

WASHING CONDITIONS  
☐ △ ☒ ☓ Ⓢ



Example: LIGHT GREY - TG02



LIGHT GREY - TG02



GREY- TG12



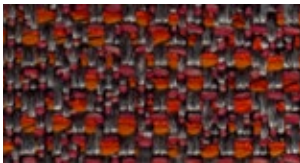
PALE PINK - TG29



PURPLE - TG48



BLACK - TG53



ORANGE - TG60

**FINISHES**

**FABRICS**

PES - POLYESTER  
 PP - POLYPROPYLENE  
 CO - COTTON

WO - NATURAL WOOL  
 CV - VISCOSE  
 MA - MINERAL FIBRE

**LASER J FLASH**  
 REF CAT 2

RECOMMENDED FOR  
 Domestic & Contract use

REVERBERATING CHAMBER VALUE  
 ISO 354: 0,8

COMPOSITION  
 100% POLYESTER TREVIRA CS

FIRE TEST  
 UNI 9174-8456 Class C1.  
 UNI 9175 Class 1 IM.  
 DIN 4102 Class B1.  
 NF 92501-7 Class M1.  
 NF D 60013 Class AM18.

ABRASION RESISTANCE  
 ISO 12947-2 150.000 Rubs

EN 1021-1 EN 1021 - 2  
 BS 5852 Crib 5.  
 BS 7176 Class Medium Hazard.  
 EN 13773 Class 1.  
 OENORM 3800-1 Class B1, Q1, TR1.  
 California TB 117:2013.  
 USA NFPA 701.  
 USA NFPA 260.  
 IMO part 8 Upholstery.

MELANGE FABRIC IN 25 COLORSHADES.  
 Weight: 770 G/ML - 550 G/M<sup>2</sup>  
 Height: 140 CM

LIGHT FASTNESS  
 ISO 105-B02: 6 Blue scale

FASTNESS TO RUBBING  
 ISO 105-X12: 4/5 Grey scale.

PILLING (2000 rubs)  
 ISO 12945-2: 5

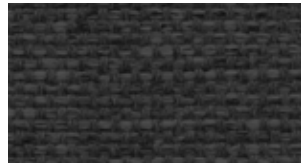
CERTIFICATIONS:  
 Oekotex; Euflower - Ecolabel



Example: MUSTARD - TJ01



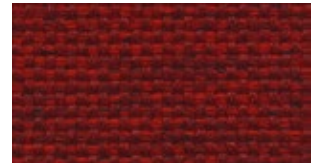
MUSTARD - TJ01



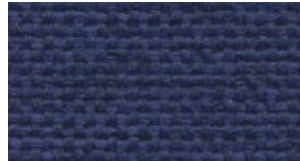
BLACK - TJ02



GREY - TJ03



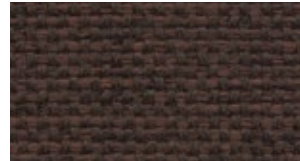
RED - TJ04



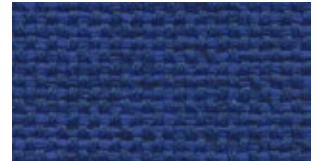
NAVY - TJ05



GREEN - TJ06



BROWN - TJ07



BLUE - TJ08



**FUSION**  
REF CAT 3

RECOMMENDED FOR  
Contract use

COMPOSITION / COMPOSICIÓN  
34%WO 28%PES 23%PP 15%CO

ABRASION RESISTANCE (END POINT)  
EN ISO 12947-2:1998 - 62000

PILLING RESISTANCE  
EN ISO 12945/2:2000; Modified martindale  
method (2000 and 7000 cycles)  
(Scale from 1 worst to 5 best): 4-5  
EN ISO 12945/2:2000;

ASSESSMENT OF IGNITABILITY  
BS 5852 Source 0  
BS 5852 Source 1  
EN 1021- Part 1:2006  
EN 1021- Part 2:2006  
CAL TB 117:2013 California - AB-2998

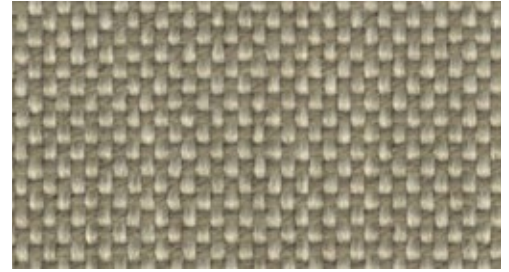
NFPA 260:2013  
BS 7176 Low Hazard  
UNI 9175 Clase 3IM  
IMO Anexo 1 Parte 8

LIGHT FASTNESS  
EN ISO 105-B02:1998 & EN ISO 105 B02/  
A01:2002

COLOUR DEGRADATION ON BLUE scale  
(Scale from 1 worst to 8 best): 7-8

COLOUR FASTNESS TO RUBBING (dry  
and wet)  
EN ISO 105-X12:2002  
(Scale from 1 worst to 5 best): 4-5

WASHING CONDITIONS



Example: BEIGE - TF05



BEIGE - TF05



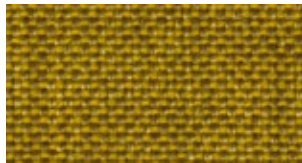
DARK GREY - TF53



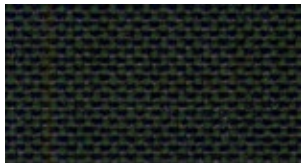
LIGHT GREY - TF54



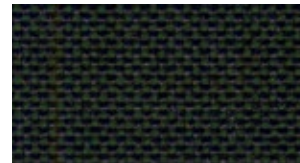
GARNET - TF122



MUSTARD - TF125



GREEN - TF138



BLUE - TF143



ANTACITE GREY - TF155

**FINISHES**

**FABRICS**

PES - POLYESTER  
PP - POLYPROPYLENE  
CO - COTTON

WO - NATURAL WOOL  
CV - VISCOSE  
MA - MINERAL FIBRE

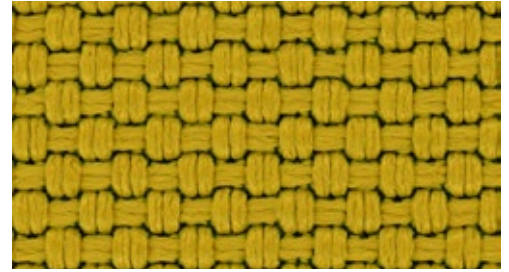
**NABUCCO**  
REF CAT 3

RECOMMENDED FOR  
Contract use

PILLING (2000 rubs)  
ISO 12945-2: 5

DESCRIPTION  
Heavy structured fabric with a high resistance. 19 colors  
Weight: 1290 g/ml - 920 g/m<sup>2</sup>  
Height: 140 cm

FIRE TEST:  
UNI 9174-8456 Class C1.  
UNI 9175 Class 1 IM.  
DIN 4102 Class B1.  
NF 92501-7 Class M1.  
NF D 60013 Class AM18.  
EN 1021-1 EN 1021-2  
EN 13773 Class 1.  
OENORM 3800-1 Class B1, Q1, TR1.  
California TB 117:2013.  
USA NFPA 701.  
USA NFPA 260.  
IMO part 8 Upholstery.



Example: MUSTARD - TN01

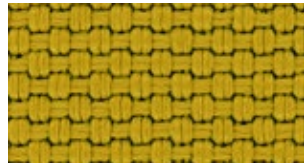
COMPOSITION: 100% TREVIRA CS  
Abrasion resistance: ISO 12947/2: 120.000 Rubs

ABRASION RESISTANCE  
ISO 12947-2 120.000 RUBS.

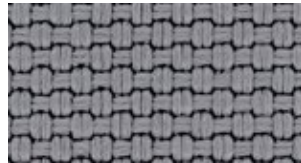
LIGHT FASTNESS  
ISO 105-B02: 6 blue scale

FASTNESS TO RUBBING  
ISO 105-X12: 4/5 grey scale

CERTIFICATIONS  
Oekotex



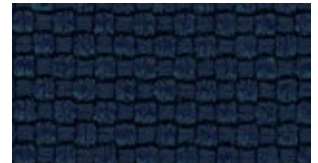
MUSTARD - TN01



GREY- TN05



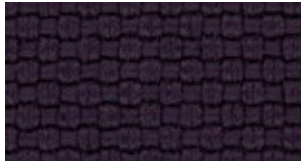
DARK ORANGE - TN02



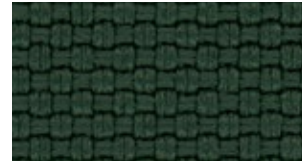
NAVY - TN06



BEIGE - TN03



VIOLET - TN07



GREEN - TN04



BLACK - TN08

**MOSS**  
REF CAT 4

RECOMMENDED FOR  
Domestic use

BS 7176 Low Hazard  
UNI 9175 Class 1IM  
IMO Anexo 1 Parte 8  
NF D 60 013  
DIN 4102 B2

COMPOSITION  
100% PES FR

ABRASION RESISTANCE (END POINT)  
EN ISO 12947-2:1998 - 50.000

ACOUSTIC CERTIFICATE  
EN ISO 354

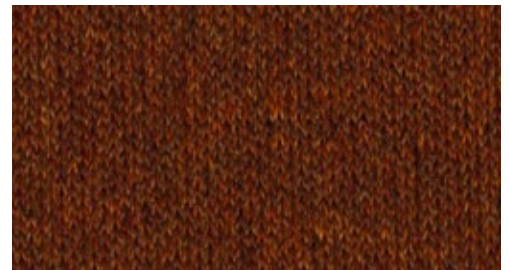
PILLING RESISTANCE  
EN ISO 12945/2:2000  
Modified martindale method (2000 and 7000 cycles) (Scale from 1 worst to 5 best): 4-5

LIGHTFASTNESS  
EN ISO 105-B02:1998 & EN ISO 105 B02/A01:2002  
Colour degradation on blue scale (Scale from 1 worst to 8 best): 6-7

ASSESSMENT OF IGNITABILITY  
BS 5852 Source 0  
BS 5852 Source 1  
EN 1021- Part 1:2006  
EN 1021- Part 2:2006  
CAL TB 117:2013 California - AB-2998  
NFPA 260:2013

COLOUR FASTNESS TO RUBBING  
EN ISO 105-X12:2002 (Scale from 1 worst to 5 best)  
DRY: 5; WET: 4-5L

WASHING CONDITIONS



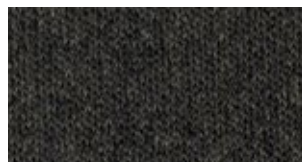
Example: RED - TM65



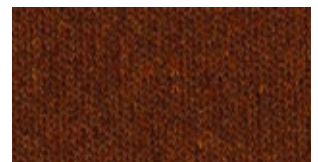
ORANGE BROWN - TM24



BLUE - TM45



DARK GREY - TM53

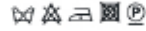


RED - TM65

**SHAUN**  
REF CAT5

COMPOSITION  
29%PES 29%PAN 21%CO 15%WO 6%CV

TEAR RESISTANCE  
47.600 cycles Martindale BS 5690.  
Grade 4, Pilling Test DIN 53865.  
Grade 4, Colour fastness to light BS EN 2015- B02.



Example: BROWN - TL10



WHITE - COL. 1



YELLOW - COL. 5



GREEN - COL. 6

**GAMMA**  
REF G

RECOMMENDED FOR  
Domestic use

COMPOSITION  
100% PP, outdoor use  
Weight / Ancho:  
200g/mq

TEAR RESISTANCE  
40.000 Martindale  
(UNE EN ISO 12947-1)

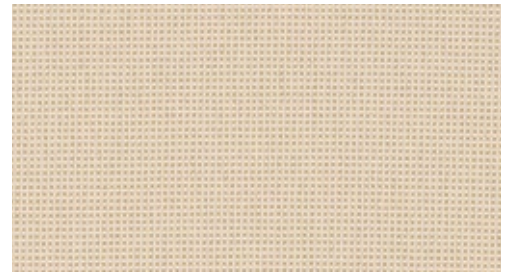
COLOUR FASTNESS  
8-8 (UNI EN 180 105B02)

CLEANING  
Dry clean  
UV protection (0-50):  
50+

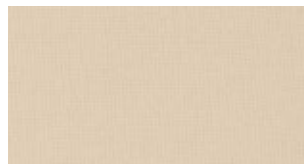
FIRE TEST  
UE: EN 1021 - 1:2006  
BS 5852 - 0  
BS 5852 - 1  
D: DIN 66084 : 2003 clasification P-c  
USA: CALTB 117 : 2000 Section E  
NFPA 260 : 2009 Class 1

COLOUR MATCHING  
Colour variations between batches (3%)

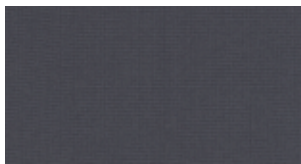
MAINTENANCE  
Vacuum regularly. In case of stains, use a damp cloth with neutral soap suitable for cleaning upholstery.



Example: WHITE - G04



WHITE - G04



GREY - G13



GREEN - G16

**FOAMS**