

FLORIDA
REF F

RECOMMENDED FOR
Contract use

COMPOSITION
Raw hide leather (corrected grain)
through dyeing aniline

TEAR RESISTANCE
>20N (UNI EN ISO 3377-1)

CRACK RESISTANCE
50.000 Cycles (UNI EN ISO 5402)

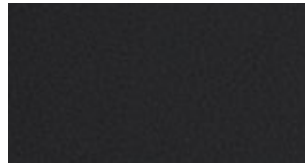
DRY RUB FASTNESS
1.000 Cycles Vol. >4 Grey scale
(UNI EN ISO 11640)

LIGHT FASTNESS
Vol. >6 Blue scale
(UNI EN ISO 105-B02)

FIRE TEST
BS 5852-0 - BS 5852-1
BS5852 CRib5 (optional)
UNI EN 1021-1
UNI EN 1021-2
NFPA 260/UFAC
California TB 117 Section E -AB-2998



Example: F15 - Camel



F10 - BLACK



F15 - CAMEL



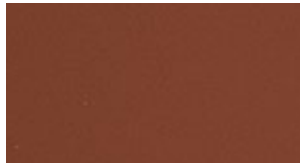
F20 - DARK ORANGE



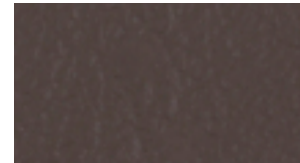
F25 - YELLOW



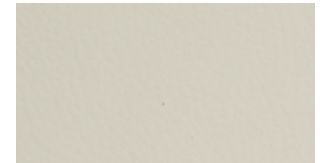
F27 - CHARCOAL GREY



F51 - BROWN



F52 - DARK BROWN



F53 - BEIGE

PANAMA
REF P

RECOMMENDED FOR
Contract use

COMPOSITION
Raw hide leather (corrected grain)

TEAR RESISTANCE
20N (EN3377-1)

CRACK RESISTANCE
50.000 Cycles (EN ISO 5402)

DRY RUB FASTNESS
1.000 Cycles / Vol. 5 Grey scale
(ISO 11640)

WET RUB FASTNESS
250 Cycles / Vol. 5 Grey scale
(ISO 11640)

LIGHT FASTNESS
72 h. exposition / Vol. 5 Grey scale
(EN ISA 105-B02)

FIRE TEST
BS 5852-0 - BS 5852-1
BS5852 CRib5 (optional)
UNI EN 1021-1
UNI EN 1021-2
NFPA 260/UFAC
California TB 117 Section E - AB-2998



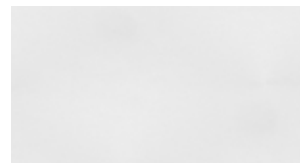
Example: P01 - Sand



P01 - SAND



P10 - BLACK



P04 - WHITE



P15 - DARK BROWN

**RUSTICO NABUK
(VINTAGE)**
REF V

RECOMMENDED FOR
Domestic use

LIGHT FASTNESS
Vol. >3 Blue scale (EN ISA 105-B02)

COMPOSITION
NABUK: Through dyeing aniline

FIRE TEST
BS 5852-0 - BS 5852-1
UNI EN 1021-1
UNI EN 1021-2
NFPA 260 / UFAC
FS191 Método S903 - Port Authority of NY
IMO Resolution A.652 (16)
California TB 117 Section E - AB-2998

TEAR RESISTANCE
>20N (UNI EN ISO 3377-1:2012)

DRY RUB FASTNESS
50 cycles / Vol. >3 Grey scale
(ISO 11640)



Example: V10 - Angel Black



V10 - ANGEL BLACK



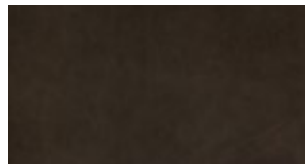
V22 - GREY



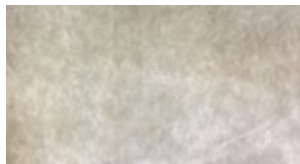
V18 - AGED CAMEL



V23 - SEPIA



V19 - AGED TESTA DI MORO



V24 - ORETA

**DREAM
(SAUVAGE)**
REF S

RECOMMENDED FOR
Domestic use

RESISTANCE TO WATER DROP
UNI EN ISO 15700 >3 Grey scale

COMPOSITION
Chrome tanned raw hides.
Full grain, aniline dyeing.

TEAR RESISTANCE
>40N UNI EN ISO 3377-2

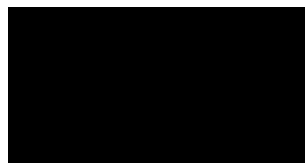
DRY RUB FASTNESS
150 cycles UNI EN ISO 11640

FIRE TEST
BS 5852:2006 Cigarette test
BS 5852:2006 Match test
UNI EN 1021-1: 2014 Cigarette test
UNI EN 1021-2: 2014
California TB117 Section E

WET RUB FASTNESS
50 cycles UNI EN ISO 11640



Example: S45 - Clay



S40 - BLACK



S46 - ALPINE

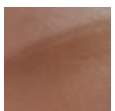


S45 - CLAY



S50 - GRAPEFRUIT

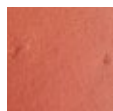
RUSTICO NABUK & DREAM LEATHER IMPERFECTIONS



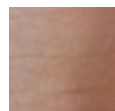
Wrinkles



Scar



Insect bites



Neck folds



Warts

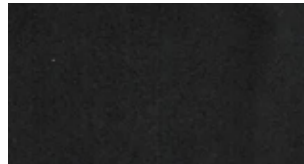
HIDE
REF C

COMPOSITION
Vegetable tanned cow leather.

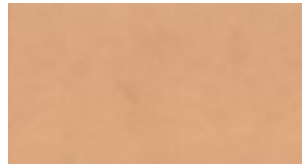
FIRE TEST
California TB 117-2013 section 1



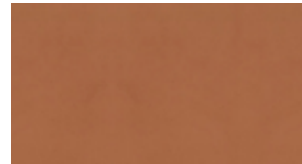
Example: C13 - Natural



C10 - BLACK



C13 - NATURAL



C20 - TOASTED

FUSION
F 900

COMPOSITION
Chrome tanned full grain European bovine.

TEAR RESISTANCE
EN 3377-1 > 20N.

DRY RUB FASTNESS
EN ISO 11640/ EN ISO 11641 >4, 800 cycles

FINISH ADHESION
ISO 11644 > 2.0N/10MM.

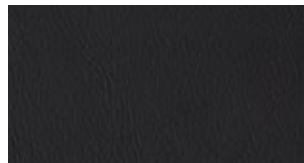
WET RUB FASTNESS
EN ISO 11640/ EN ISO 11641 >3-4, 200 cycles

FIRE TEST
UNE EN 1021-1 UNE EN 1021-2.
OMI MSC:307 (88) Annex 1 Part 8.
R118/2.

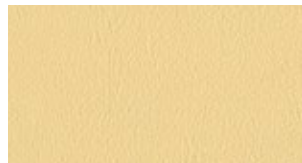
COLOR FASTNESS TO ARTIFICIAL LIGHTEN
EN ISO 105-B 02 Blue scale > 5



Example: F907 - Cream



F903 - DARK GREY



F907 - CREAM



F930 - DARK RED



F937 - BROWN

CLUB
REF CL

COMPOSITION
Chrome tanned grain European bull, with anilina finish.

TEAR RESISTANCE
EN 3377-1 > 20N.

DRY RUB FASTNESS
EN ISO 11640/ EN ISO 11641 >3, 50 cycles.

FINISH ADHESION
ISO 11644 > 2.0N/10MM.

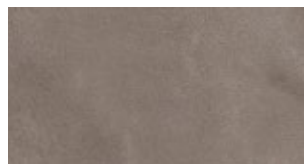
WET RUB FASTNESS
EN ISO 11640/ EN ISO 11641 >3, 20 cycles.

FIRE TEST
UNE EN 1021-1 UNE EN 1021-2.
OMI MSC:307 (88) Annex 1 Part 8.
R118/2.

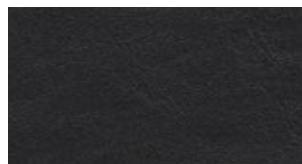
COLOR FASTNESS TO ARTIFICIAL LIGHTEN
EN ISO 105-B 02 Blue scale > 3



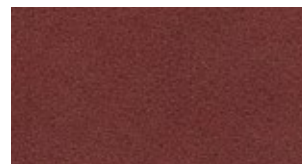
Example: CL02 - Grey



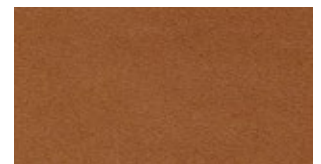
CL02 - GREY



CL03 - BLACK



CL05 - BURGUNDY



CL52 - TOASTED BROWN

CLEANING AND MAINTENANCE**DON'T**

- . Avoid direct light.
- . Avoid sharp objects.
- . Keep away from direct heat.
- . Do not use household cleaners.
- . Do not rub.

DO

- . Dust regularly with a soft and dry cloth.
- . Clean with a slightly damp cloth and mild soap. Dry immediately after treatment.
- . Use a light circular motion working toward the center of the stain.
- . To Moisturize the leather we recommend to apply natural neutral creams.

CHARACTERISTICS

The natural characteristics of leather makes this product uneven as of all products that come from nature. Correcting processes make the leathers surface texture even and consequentially less natural. Grain changes, marks and scars caused during the life of an animal are attributes of fine quality and unaltered leather. Wrinkles, bites or other imperfections cannot be considered as defects in leather, but proof of its high quality.

The wrinkles on the surface are part of the original design. Both the number and size of the wrinkles can vary as natural leathers are being used. The elasticity itself enhances the diversity and variability of the wrinkles.

LIBRA
REF CAT 1

RECOMMENDED FOR
Contract use

LIGHTFASTNESS
EN ISO 105-B02:1998 & EN ISO 105 B02/
A01:2002

COMPOSITION
50%PP 32%PES 18%CO

COLOUR DEGRADATION
On blue scale (Scale from 1 worst
to 8 best): 6-7

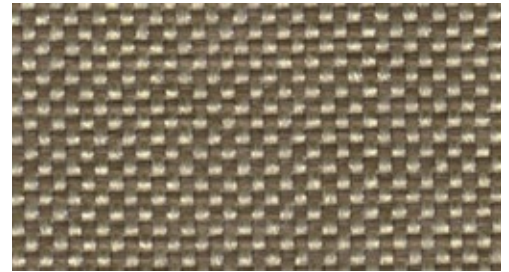
ABRASION RESISTANCE (END POINT)
EN ISO 12947-2:1998 - 66000

COLOUR FASTNESS TO RUBBING
(DRY AND WET)
EN ISO 105-X12:2002
(Scale from 1 worst to 5 best): 4-5

PILLING RESISTANCE
EN ISO 12945/2:2000; Modified martindale
method (2000 and 7000 cycles) (Scale
from 1 worst to 5 best): 4-5

WASHING CONDITIONS
☰ △ ☒ ☒ ☒ ☒

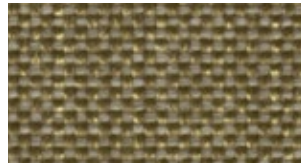
FIRE TEST
BS 5852 Source 1 (optional)
EN 1021- part 2:2006 (optional)
CAL TB 117:2013 California - AB-2998
NFPA 260:2013
BS 7176 Low Hazard (optional)
UNI 9175 Classe 3IM (optional)



Example: BROWN - TL10



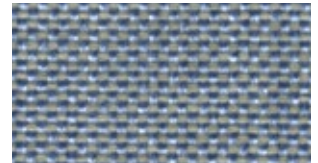
BROWN - TL10



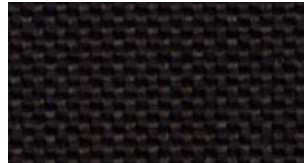
BEIGE - TL20



PALE PINK - TL29



GREY - TL49



DARK BROWN - TL53



PINK - TL62

IRIS
REF CAT 2

RECOMMENDED FOR
Domestic use

LIGHT FASTNESS
EN ISO 105-B02:1998 & EN ISO 105 B02/
A01:2002

COMPOSITION
41%CO 29%PES 24%PP 6%CV

WATER REPELLENCY
AATCC 79:2000 (value > 300): 70

ABRASION RESISTANCE (END POINT)
EN ISO 12947-2:1998 - 32000

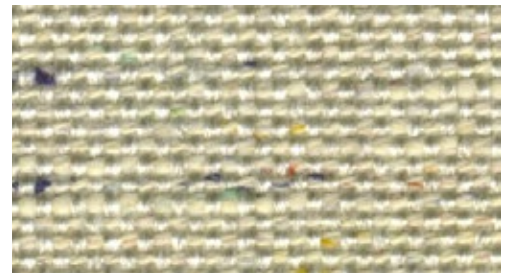
OIL REPELLENCY
EN ISO 14419:1999 /AC:2006 -
AATCC 118:2002
(Scale from 1 worst to 8 best): 5-6

PILLING RESISTANCE
EN ISO 12945/2:2000; Modified martindale
method (2000 and 7000 cycles) (Scale
from 1 worst to 5 best): 4

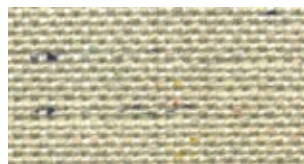
WASHING CONDITIONS
☰ ☒ ☒ ☒ ☒ ☒

FIRE TEST
BS 5852 Source 1 (optional)
EN 1021- part 2:2006 (optional)
CAL TB 117:2013 California - AB-2998
NFPA 260:2013

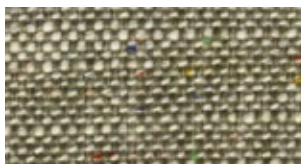
REPELLENCE PROTECTION



Example: BEIGE - T105



BEIGE - T105



GREY - T111



BROWN - T120

GAUDÍ
REF CAT 2

RECOMMENDED FOR
Domestic & Contract use

COMPOSITION
60%PP 35%PES 5%CO

ABRASION RESISTANCE (END POINT)
EN ISO 12947-2:1998 - 46000

PILLING RESISTANCE
EN ISO 12945/2:2000; Modified martindale method (2000 and 7000 cycles) (Scale from 1 worst to 5 best): 4-5

FIRE TEST
BS 5852 Source 1 (optional)
EN 1021- part 2:2006 (optional)
CAL TB 117:2013 California - AB-2998
NFPA 260:2013
BS 7176 Low Hazard (optional)
UNI 9175 Clase 3IM (optional)

LIGHT FASTNESS
EN ISO 105-B02:1998 & EN ISO 105 B02/A01:2002

COLOUR DEGRADATION
On blue scale (Scale from 1 worst to 8 best): 6-7

COLOUR FASTNESS TO RUBBING (DRY AND WET)
EN ISO 105-X12:2002
(Scale from 1 worst to 5 best): 4-5

WASHING CONDITIONS
☰ ☒ ☒ ☒ ☒



Example: LIGHT GREY - TG02



LIGHT GREY - TG02



GREY- TG12



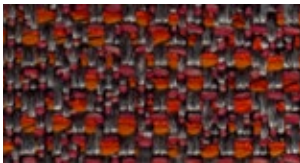
PALE PINK - TG29



PURPLE - TG48



BLACK - TG53



ORANGE - TG60

FINISHES

FABRICS

PES - POLYESTER
 PP - POLYPROPYLENE
 CO - COTTON

WO - NATURAL WOOL
 CV - VISCOSE
 MA - MINERAL FIBRE

LASER J FLASH
 REF CAT 2

RECOMMENDED FOR
 Domestic & Contract use

REVERBERATING CHAMBER VALUE
 ISO 354: 0,8

COMPOSITION
 100% POLYESTER TREVIRA CS

FIRE TEST
 UNI 9174-8456 Class C1.
 UNI 9175 Class 1 IM.
 DIN 4102 Class B1.
 NF 92501-7 Class M1.
 NF D 60013 Class AM18.

ABRASION RESISTANCE
 ISO 12947-2 150.000 Rubs

EN 1021-1 EN 1021 - 2
 BS 5852 Crib 5.
 BS 7176 Class Medium Hazard.
 EN 13773 Class 1.

MELANGE FABRIC IN 25 COLORSHADES.
 Weight: 770 G/ML - 550 G/M²
 Height: 140 CM

LIGHT FASTNESS
 ISO 105-B02: 6 Blue scale

OENORM 3800-1 Class B1, Q1, TR1.
 California TB 117:2013.

FASTNESS TO RUBBING
 ISO 105-X12: 4/5 Grey scale.

USA NFPA 701.
 USA NFPA 260.
 IMO part 8 Upholstery.

PILLING (2000 rubs)
 ISO 12945-2: 5

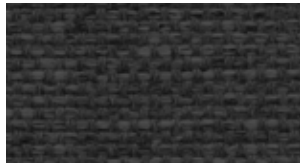
CERTIFICATIONS:
 Oekotex; Euflower - Ecolabel



Example: MUSTARD - TJ01



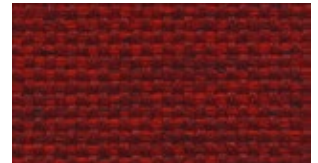
MUSTARD - TJ01



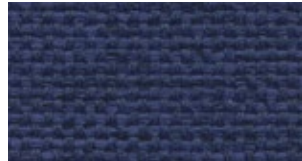
BLACK - TJ02



GREY - TJ03



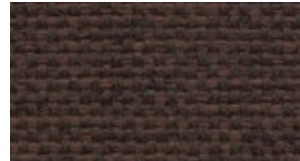
RED - TJ04



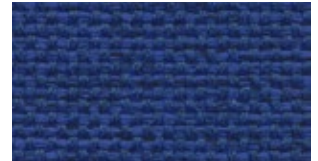
NAVY - TJ05



GREEN - TJ06



BROWN - TJ07



BLUE - TJ08

FUSION
REF CAT 3

RECOMMENDED FOR
Contract use

COMPOSITION / COMPOSICIÓN
34%WO 28%PES 23%PP 15%CO

ABRASION RESISTANCE (END POINT)
EN ISO 12947-2:1998 - 62000

PILLING RESISTANCE
EN ISO 12945/2:2000; Modified martindale
method (2000 and 7000 cycles)
(Scale from 1 worst to 5 best): 4-5
EN ISO 12945/2:2000;

ASSESSMENT OF IGNITABILITY
BS 5852 Source 0
BS 5852 Source 1
EN 1021- Part 1:2006
EN 1021- Part 2:2006
CAL TB 117:2013 California - AB-2998

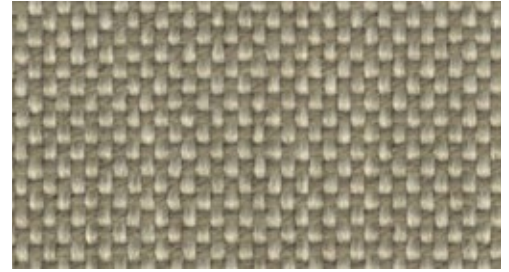
NFPA 260:2013
BS 7176 Low Hazard
UNI 9175 Clase 3IM
IMO Anexo 1 Parte 8

LIGHT FASTNESS
EN ISO 105-B02:1998 & EN ISO 105 B02/
A01:2002

COLOUR DEGRADATION ON BLUE scale
(Scale from 1 worst to 8 best): 7-8

COLOUR FASTNESS TO RUBBING (dry
and wet)
EN ISO 105-X12:2002
(Scale from 1 worst to 5 best): 4-5

WASHING CONDITIONS



Example: BEIGE - TF05



BEIGE - TF05



DARK GREY - TF53



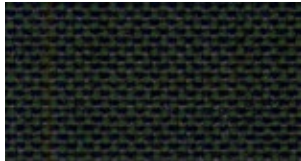
LIGHT GREY - TF54



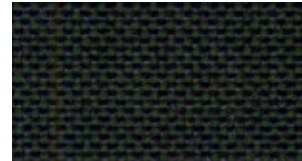
GARNET - TF122



MUSTARD - TF125



GREEN - TF138



BLUE - TF143



ANTACITE GREY - TF155

FINISHES

FABRICS

PES - POLYESTER
 PP - POLYPROPYLENE
 CO - COTTON

WO - NATURAL WOOL
 CV - VISCOSE
 MA - MINERAL FIBRE

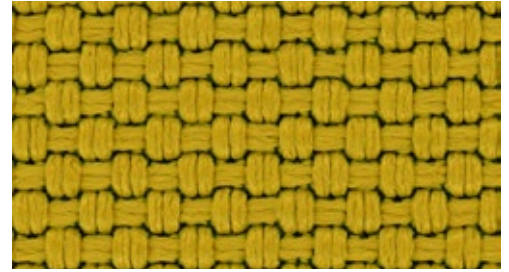
NABUCCO
 REF CAT 3

RECOMMENDED FOR
 Contract use

PILLING (2000 rubs)
 ISO 12945-2: 5

DESCRIPTION
 Heavy structured fabric with a high resistance . 19 colors
 Weight: 1290 g/ml - 920 g/m²
 Height: 140 cm

FIRE TEST:
 UNI 9174-8456 Class C1.
 UNI 9175 Class 1 IM.
 DIN 4102 Class B1.
 NF 92501-7 Class M1.
 NF D 60013 Class AM18.
 EN 1021-1 EN 1021-2
 EN 13773 Class 1.
 OENORM 3800-1 Class B1, Q1, TR1.
 California TB 117:2013.
 USA NFPA 701.
 USA NFPA 260.
 IMO part 8 Upholstery.



Example: MUSTARD - TN01

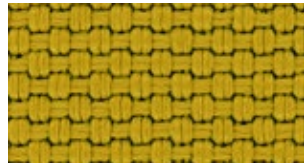
COMPOSITION: 100% TREVIRA CS
 Abrasion resistance: ISO 12947/2: 120.000 Rubs

ABRASION RESISTANCE
 ISO 12947-2 120.000 RUBS.

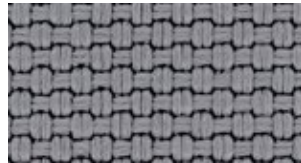
LIGHT FASTNESS
 ISO 105-B02: 6 blue scale

FASTNESS TO RUBBING
 ISO 105-X12: 4/5 grey scale

CERTIFICATIONS
 Oekotex



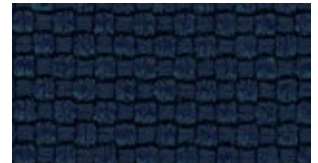
MUSTARD - TN01



GREY- TN05



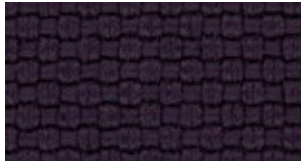
DARK ORANGE - TN02



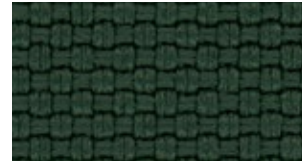
NAVY - TN06



BEIGE - TN03



VIOLET - TN07



GREEN - TN04



BLACK - TN08

MOSS
 REF CAT 4

RECOMMENDED FOR
 Domestic use

BS 7176 Low Hazard
 UNI 9175 Classe 1IM
 IMO Anexo 1 Parte 8
 NF D 60 013
 DIN 4102 B2

COMPOSITION
 100% PES FR

ABRASION RESISTANCE (END POINT)
 EN ISO 12947-2:1998 - 50.000

ACOUSTIC CERTIFICATE
 EN ISO 354

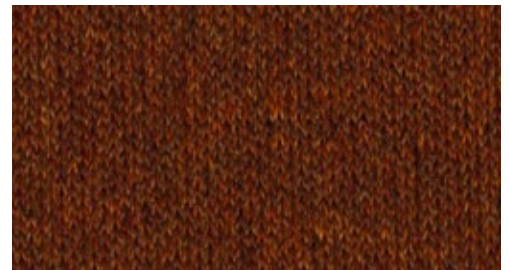
PILLING RESISTANCE
 EN ISO 12945/2:2000
 Modified martindale method (2000 and 7000 cycles) (Scale from 1 worst to 5 best): 4-5

LIGHTFASTNESS
 EN ISO 105-B02:1998 & EN ISO 105 B02/ A01:2002
 Colour degradation on blue scale (Scale from 1 worst to 8 best): 6-7

ASSESSMENT OF IGNITABILITY
 BS 5852 Source 0
 BS 5852 Source 1
 EN 1021- Part 1:2006
 EN 1021- Part 2:2006
 CAL TB 117:2013 California - AB-2998
 NFPA 260:2013

COLOUR FASTNESS TO RUBBING
 EN ISO 105-X12:2002 (Scale from 1 worst to 5 best)
 DRY: 5; WET: 4-5L

WASHING CONDITIONS



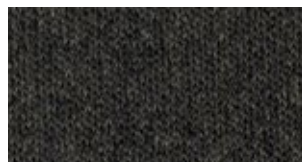
Example: RED - TM65



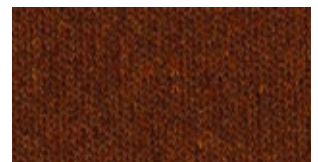
ORANGE BROWN - TM24



BLUE - TM45



DARK GREY - TM53

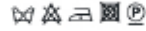


RED - TM65

SHAUN
REF CAT5

COMPOSITION
29%PES 29%PAN 21%CO 15%WO 6%CV

TEAR RESISTANCE
47.600 cycles Martindale BS 5690.
Grade 4, Pilling Test DIN 53865.
Grade 4, Colour fastness to light BS EN 2015- B02.



Example: BROWN - TL10



WHITE - COL. 1



YELLOW - COL. 5



GREEN - COL. 6

GAMMA
REF G

RECOMMENDED FOR
Domestic use

COMPOSITION
100% PP, outdoor use
Weight / Ancho:
200g/mq

TEAR RESISTANCE
40.000 Martindale
(UNE EN ISO 12947-1)

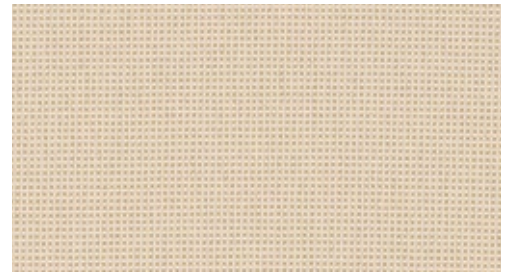
COLOUR FASTNESS
8-8 (UNI EN 180 105B02)

CLEANING
Dry clean
UV protection (0-50):
50+

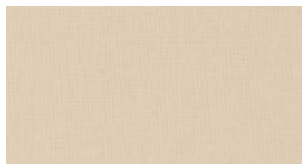
FIRE TEST
UE: EN 1021 - 1:2006
BS 5852 - 0
BS 5852 - 1
D: DIN 66084 : 2003 clasification P-c
USA: CALTB 117 : 2000 Section E
NFPA 260 : 2009 Class 1

COLOUR MATCHING
Colour variations between batches (3%)

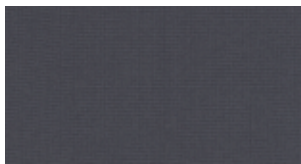
MAINTENANCE
Vacuum regularly. In case of stains, use a damp cloth with neutral soap suitable for cleaning upholstery.



Example: WHITE - G04



WHITE - G04

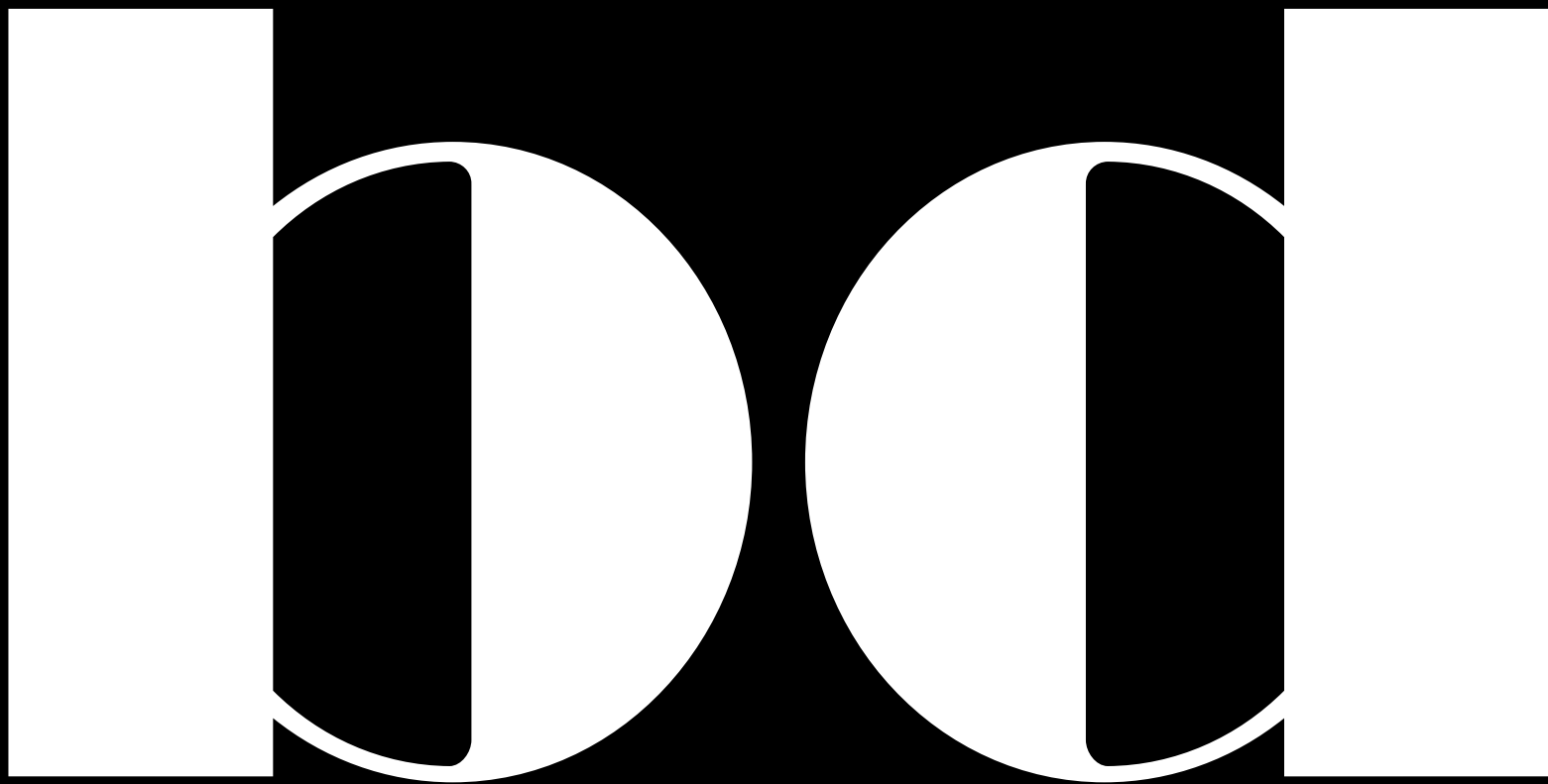


GREY - G13



GREEN - G16

FOAMS



ASH
REF FR13

Natural varnished



ASH
REF FT18

Oak stained ash



ASH
REF FT10

Black stained ash



ASH
REF FR20

Coral red stained ash
(RAL 3016)



ASH
REF FT25

Egg yolk stained ash
(RAL 1014)



ASH
REF FT29

Hazy blue stained ash
(RAL 5029)



FINISHES

WOOD

ASH
REF FT26

Olive green stained ash
(RAL 6020)



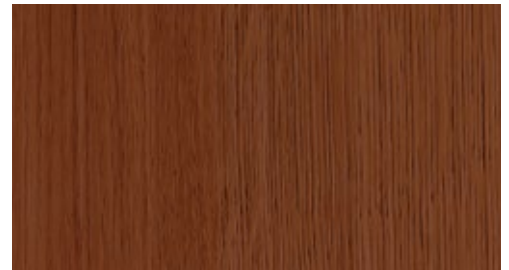
ASH
REF FT27

Berry red stained ash
(RAL 3009)



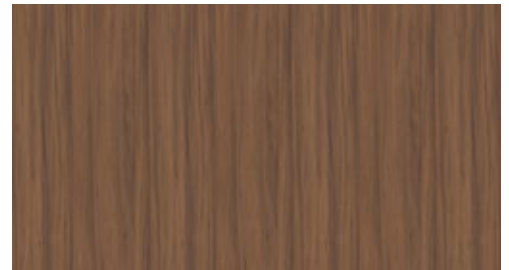
OAK
REF RM

Stained oak and varnished



WALNUT
NGEN

Walnut Nature Effect

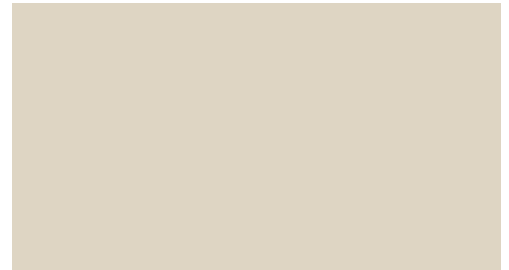


LAMINATED
REF ES

Grey perle



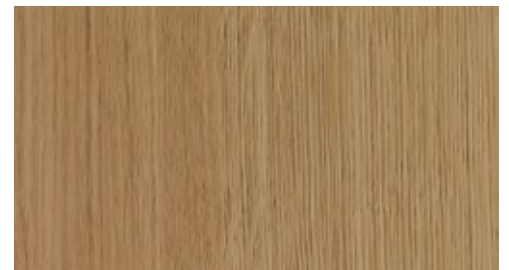
Beige



Nearly Black



Natural oak



CLEANING AND MAINTENANCE

Furniture pieces should be placed in areas with stable temperatures and humidity. Only suitable for indoor use. It is recommended that items be placed in areas with no direct exposure to air conditioners, heat or sunlight.

Rub gently with a dry cotton cloth or with a natural wax product. Solvents and abrasive detergents should especially be avoided.

BD recommends using a damp cloth using only water. For oily, greasy stains (finger prints) we recommend using a sponge with water and a neutral detergent, and afterwards finishing off with a water dampened cloth. Using detergents containing solvents and or pure ethyl alcohol should be avoided.

As these are natural colours and tones, there may be some differences. Clear woods always tend to darken with time but this also depends on the direct exposure to light.

HIGH GLOSS LACQUER
REF LAC

MDF lacquered gloss



B31 (RAL 9016) - WHITE



B10 (RAL 9005) - BLACK



09 (RAL 5002) - BLUE



B32 (RAL 5011) - BLUE



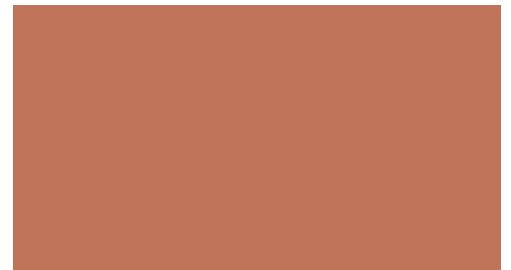
B40 (RAL 3016) - CORAL RED



B41 (RAL 6019) - PASTEL GREEN)



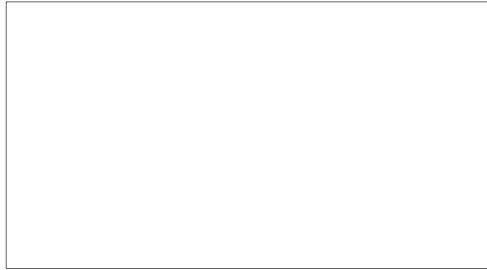
B42 (RAL 5024) - BLUE



B43 (RAL D2 040 50 30) - SALMON

MATTE LACQUER
REF LAC

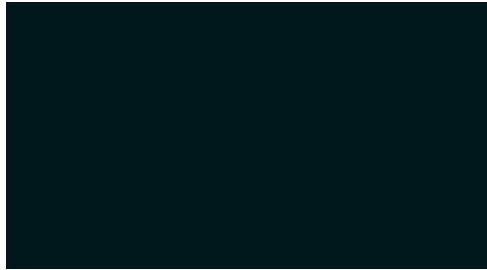
MDF matte-lacquered



M04 (RAL 9003) - WHITE



M17 (RAL 5003) - DARK BLUE



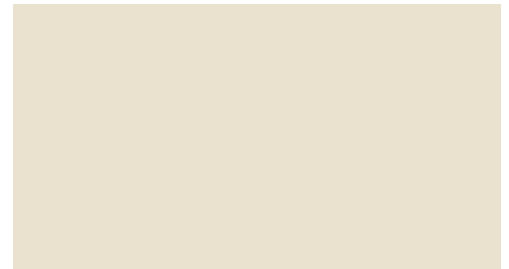
M10 (RAL 9005) - BLACK



M09 (RAL 5002) - BLUE



M19 (RAL 3004) DARK RED



M52 (NCS 1005-Y20R) - CREME



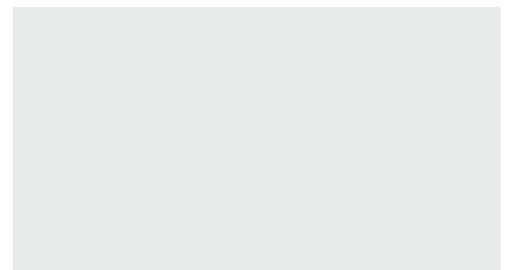
M54 (RAL 5000) - BLUE



M51 (NCS 5540-G20Y) - GREEN



M55 (RAL 1012) - YELLOW



M50 (NCS S 0502-G) - GREY

CLEANING AND MAINTENANCE

Furniture pieces should be placed in areas with stable temperatures and humidity. Only suitable for indoor use. It is recommended that items be placed in areas with no direct exposure to air conditioners, heat or sunlight.

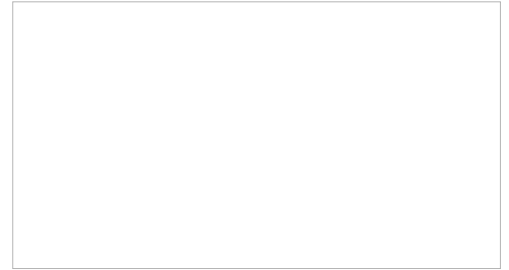
Rub gently with a dry cotton cloth or with a natural wax product. Solvents and abrasive detergents should especially be avoided.

BD recommends using a damp cloth using only water. For oily, greasy stains (finger prints) we recommend using a sponge with water and a neutral detergent, and afterwards finishing off with a water dampened cloth. Using detergents containing solvents and or pure ethyl alcohol should be avoided.

As these are natural colours and tones, there may be some differences. Clear woods always tend to darken with time but this also depends on the direct exposure to light.

REF PL

POLYPROPYLENE
White



POLYPROPYLENE
Black



POLYETHYLENE
Red - Pantone 200 C



MAINTENANCE AND CLEANING

BD recommends using a damp cloth using only water. For oily, greasy stains (finger prints) we recommend using a sponge with water and a neutral detergent, and afterwards finishing off with a water dampened cloth. Using detergents containing solvents and or pure ethyl alcohol should be avoided.

MARBLE

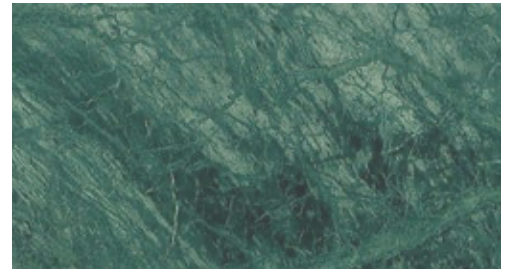
White Carrara Venato



Black Nero Marquina



Green Patrizia



MAINTENANCE AND CLEANING

BD recommends using a damp cloth using only lukewarm water. For oily, greasy stains (finger prints) we recommend using a sponge with water and a neutral detergent, and afterwards finishing off with a water dampened cloth. Using detergents containing solvents and or pure ethyl alcohol should be avoided.