

SHOWTIME 2.0 CHAIR

JAIME HAYON
2024



LOW BACKREST



HIGH BACKREST

SHOWTIME 2.0

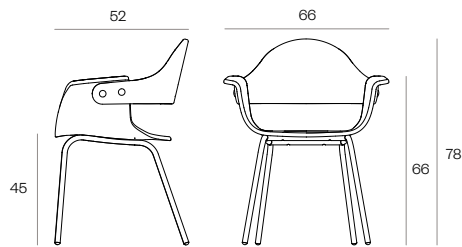
Seat and backrest in plywood veneered in beech. Upholstered or dyed in upholstery color. Union fittings in zinc-plated steel. Decorative buttons in steel powder coated in anthracite grey (RAL 7035). Upholstered components (non removable): polyether in BD catalogue fabrics and leather.

Structures:

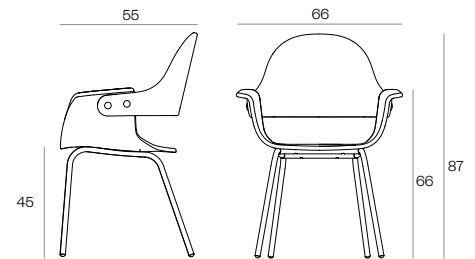
- Swivel base in tubular iron and diecast aluminum Swivel system with an iron roller bearing. All powdercoated in anthracite grey (RAL 7035). Plastic glides included. Optional soft felt glides available.
- Swivel base with casters in tubular iron and diecast aluminum Swivel system with an iron roller bearing. All powdercoated in anthracite grey (RAL 7035) 4 black casters included.
- 4 legs iron in tubular iron powdercoated in anthracite grey (RAL 7035). Plastic glides included. Optional soft felt glides available.

Dimensions

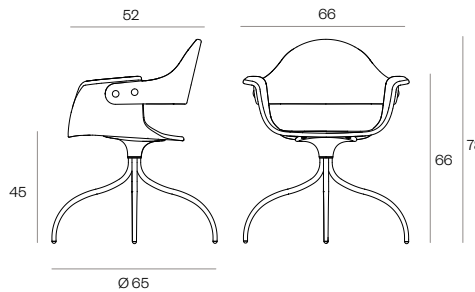
LOW BACKREST / METAL LEGS



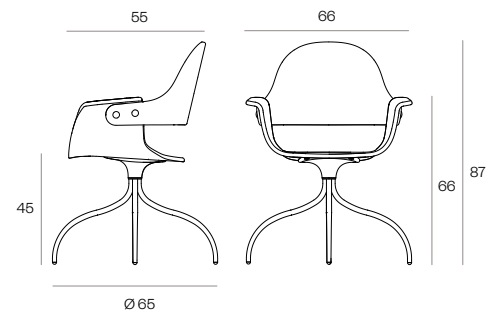
HIGH BACKREST / METAL LEGS



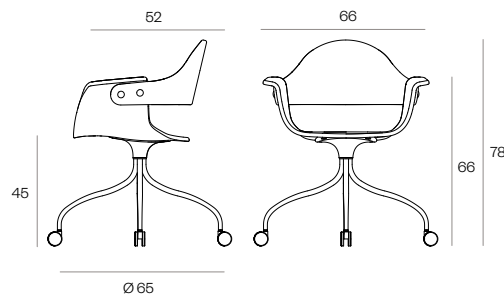
LOW BACKREST / SWIVEL BASE



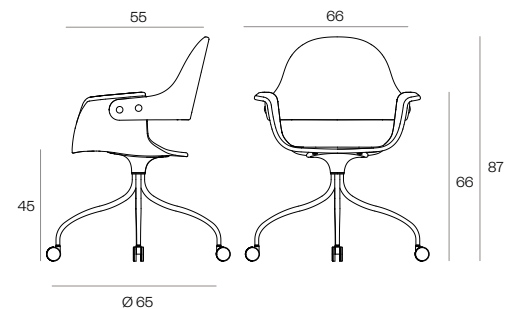
HIGH BACKREST / SWIVEL BASE



LOW BACKREST / SWIVEL BASE WITH CASTERS



HIGH BACKREST / SWIVEL BASE WITH CASTERS



BD BARCELONA

RAMÓN TURRÓ 126, 08005 BARCELONA (SPAIN)

(+34) 934 586 909

SALES@BDBARCELONA.COM

BDBARCELONA.COM

COMPONENTS, MATERIALS & FINISHES

SEAT AND BACKREST: in plywood, veneered in beech. Upholstered or dyed in upholstery color. **UNION FITTINGS:** zinc-plated steel.

DECORATIVE BUTTONS: steel powder coated in anthracite grey (RAL 7035).

UPHOLSTERED COMPONENTS: (non-removable) polyether upholstered in BD catalogue fabrics and leather.

STRUCTURES:

SWIVEL BASE: in tubular iron and diecast aluminum Swivel system with an iron roller bearing. All powdercoated in anthracite grey (RAL 7035). Plastic glides included. Optional soft felt glides available.

SWIVEL BASE WITH CASTERS: n tubular iron and diecast aluminum Swivel system with an iron roller bearing. All powdercoated in anthracite grey (RAL 7035) 4 black casters included.

4 LEGS IRON: in tubular iron powdercoated in anthracite grey (RAL 7035). Plastic glides included. Optional soft felt glides available.

DIMENSIONS & WEIGHT

LOW BACKREST CHAIR:

66w x 52d x 78h cm
26w x 20.5d x 30.7h inch
weight: 5 kg

HIGH BACKREST CHAIR:

66w x 52d x 87h cm
26w x 20.5d x 34.3h inch
weight: 5,2 kg

PACKAGING

Each module is packaged separately in one box.

CLEANING AND MAINTENANCE

WOOD: dry cleaning.

LEATHER: NOT Dry cleaning.

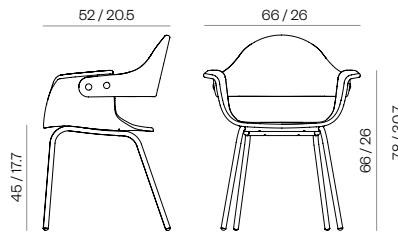
Spots can be cleaner with a lightly damp cloth and mild soap. Dry immediately the after treatment. Do not rub. Use a light circular motion working towards the center of the stain. Avoid placing leather in direct sun. Keep the leather away from direct heat. Dust regularly with a dry and soft cloth. for good maintenance, apply a colourless wax layer regularly.

FABRIC: Dry cleaning.

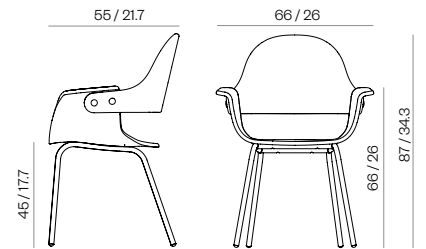
Spots can be cleaner with a lightly damp cloth and mild soap. Dry immediately the after treatment. Do not rub. Use a light circular motion working towards the center of the stain.

*Do not use steamers or abrasive cleaners

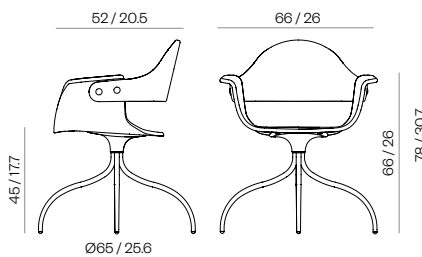
LOW BACKREST / METAL LEGS



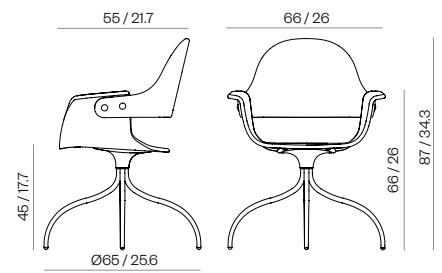
HIGH BACKREST / METAL LEGS



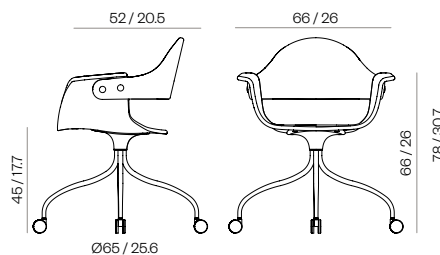
LOW BACKREST / SWIVEL BASE



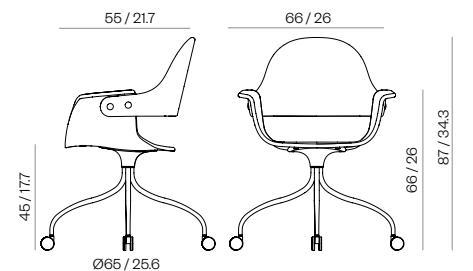
HIGH BACKREST / SWIVEL BASE



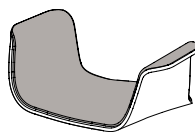
LOW BACKREST / SWIVEL BASE WITH CASTERS



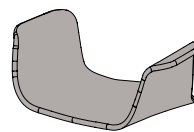
HIGH BACKREST / SWIVEL BASE WITH CASTERS



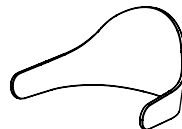
UPHOLSTERY OPTIONS



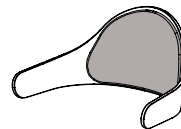
Upholstered seat interior.
Seat exterior in dyed beech plywood
tone on tone with upholstery.



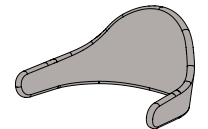
Seat upholstered entirely.



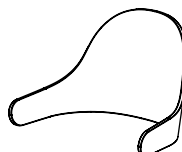
Low backrest dyed beech plywood tone
on tone with upholstery.



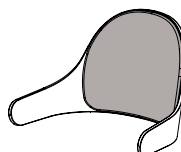
Upholstered backrest cushion.
Low backrest dyed beech plywood
tone on tone with upholstery.



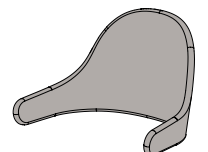
Low backrest upholstered entirely.



High backrest dyed beech plywood tone
on tone with upholstery.



Upholstered backrest cushion.
Low backrest dyed beech plywood
tone on tone with upholstery.



High backrest upholstered entirely.

BD BARCELONA

RAMÓN TURRO 126, 08005 BARCELONA (SPAIN)
(+34) 934 686 909
BD@BDBARCELONA.COM
BDBARCELONA.COM

TECHNICAL DEPARTMENT

CARRETERA CAPELLADES KM 22,750
NARCÍS MONTURIOL, 7 (POL. SESROVIRES)
SANT ESTEVE DE SESROVIRES 08635 BARCELONA (SPAIN)
(+ 34) 937 713 051